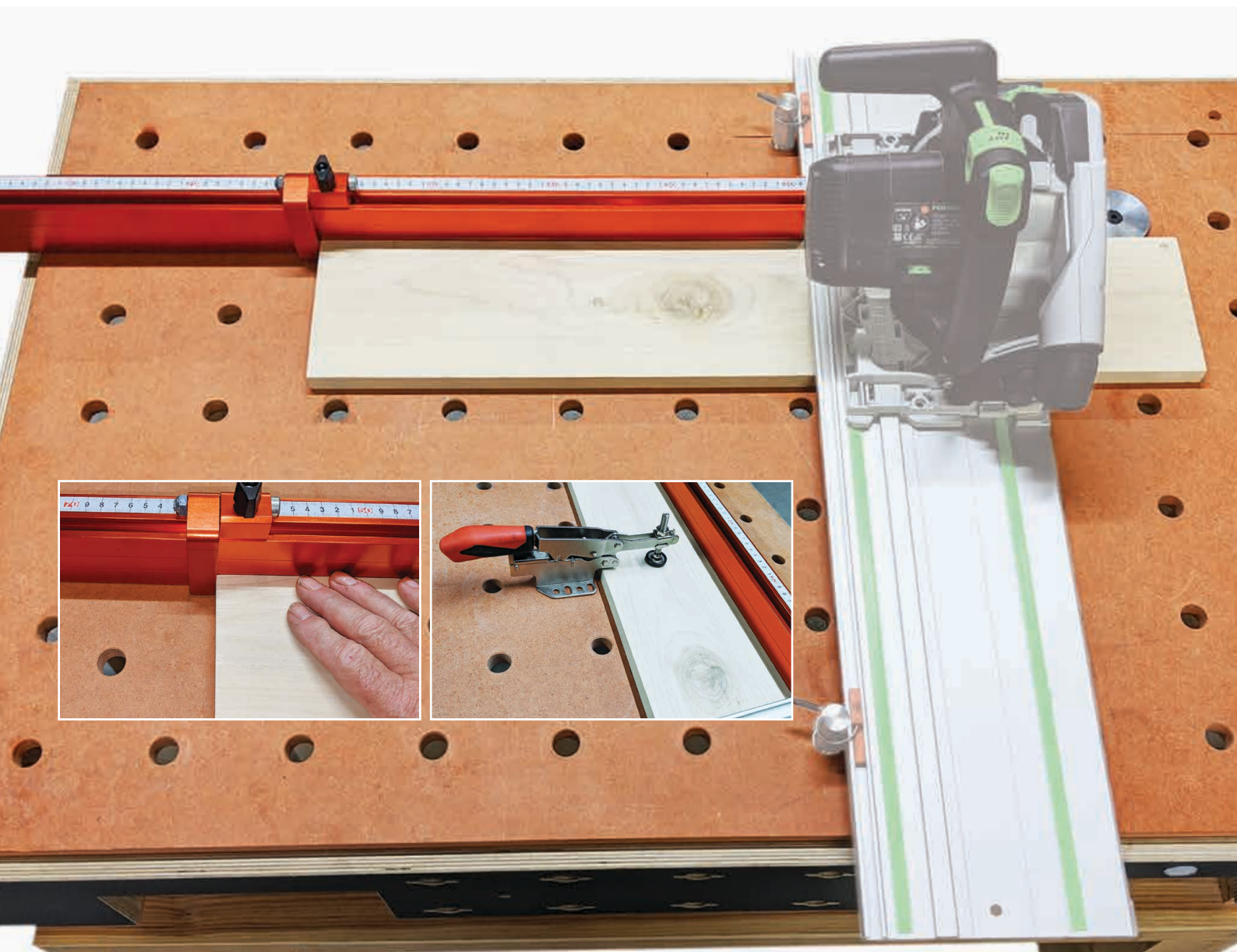


Length Stop for Guide Rails



Introduction

This UJK Fence and Length Stop is designed to be used on a 20mm grid hole work table when using a guide rail saw. It will provide a 1,100mm long fence that is exactly square to a guide rail held by dogs and clips (Festool and Makita), or held by guide rail clamps and located by dogs. There is also a sliding flip over stop to provide an accurate length stop. Twin support discs give extra support either side of the cut.

To use, you simply mount your guide rail, fit the UJK Fence and Length Stop at a convenient point between the mid and far end of the guide rail. You then need to measure the distance from the cut line created by the saw running on the guide rail and the front end of the fence. The cut line is your zero. There is a self adhesive scale supplied loose. You cut the scale at the distance

previously measured, and adhere the scale to the fence. The scale is now showing the distance to the cut line. Don't worry, it is easier than it sounds! Once set, you now have a work support fence, and a length cutting facility.



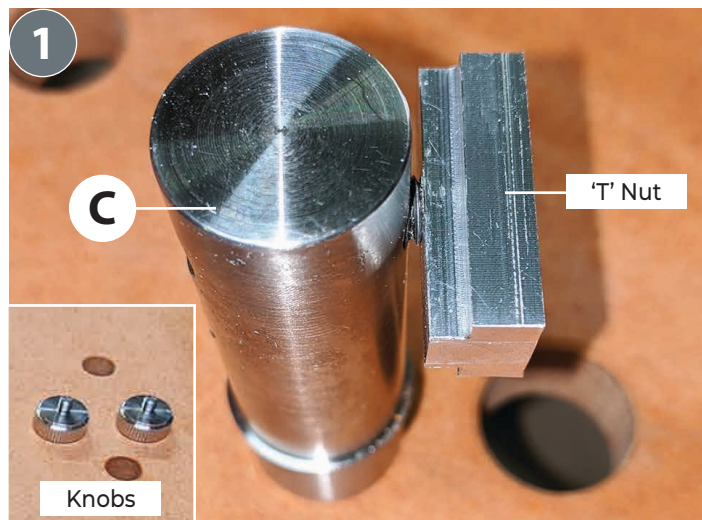
- UJK Fence and Length Stop for guide rail saws
- For use on 20mm grid hole work tables or MFT style tables
- 1,100mm long, fitted with flip over stop
- Metal backed self adhesive metric scale with clear markings
- Supplied with two 20mm dogs, securing bolts and sliding T nuts
- Allows consistent cutting to an exact length to over 1,200mm

What's Included

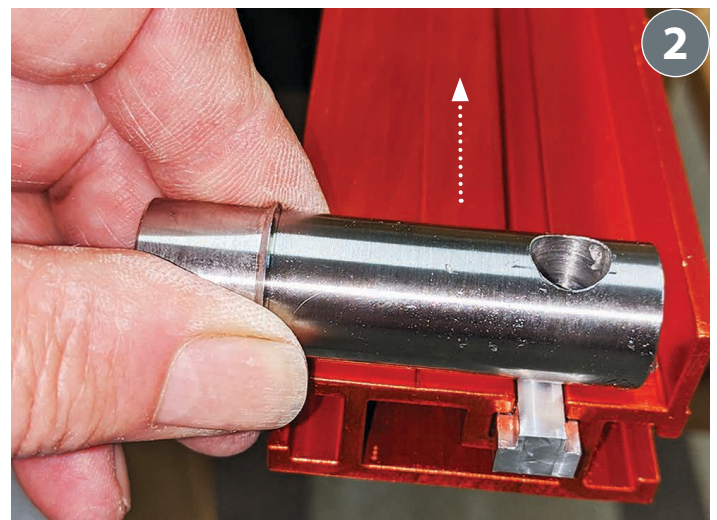
A	UJK Fence Rail
B	Tape Scale
C	Dogs with 'T' Nuts
D	Flip Over Stop
E	Shallow Workpiece Support Discs

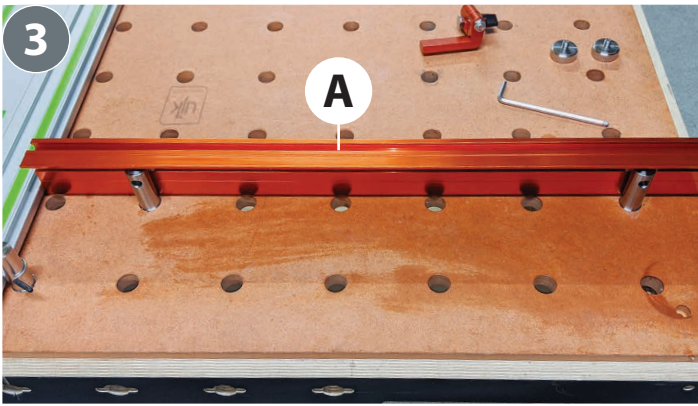
Assembly & Set-up

01. Unscrew the hand knobs from the dogs (C) and place to one side. Loosely assemble the 'T' nuts to the dogs using the hex socket bolts provided.



02. Slide these assemblies onto the rail (A) as shown.





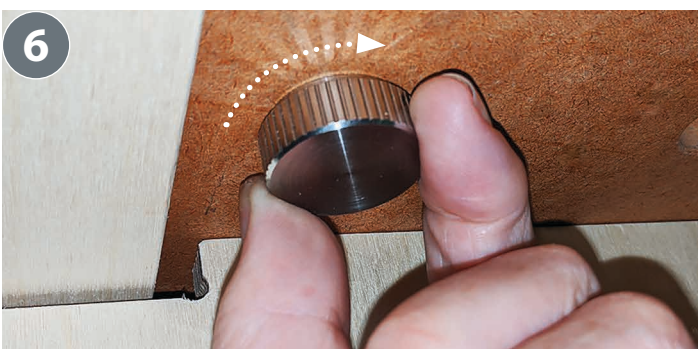
03. Place the fence rail (A) onto your 20mm hole grid table where you wish to use it.



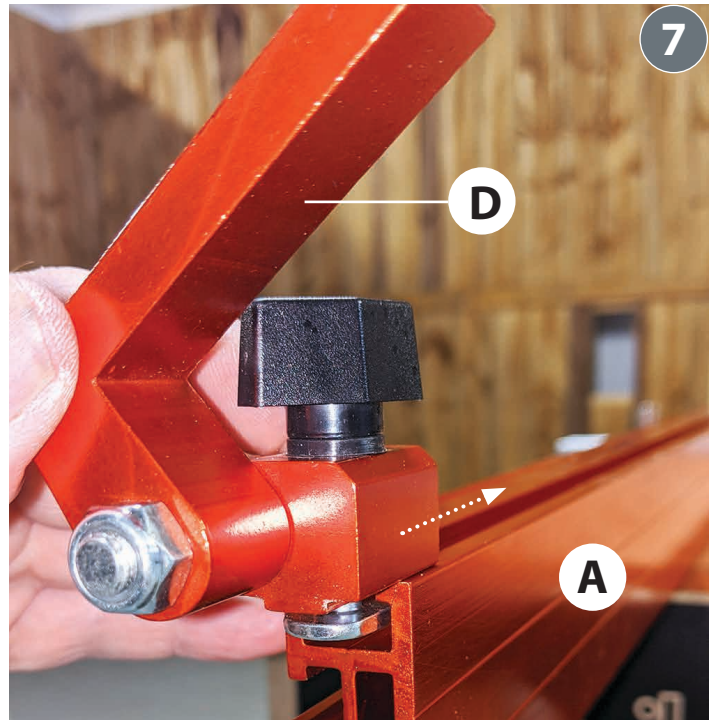
04. Fit your Guide Rail to your table, using dogs and Guide Rail Clips or Clamps. Slide the fence rail (A) up to the Guide Rail so that it touches firmly.



05. Tighten the hex socket bolts firmly.



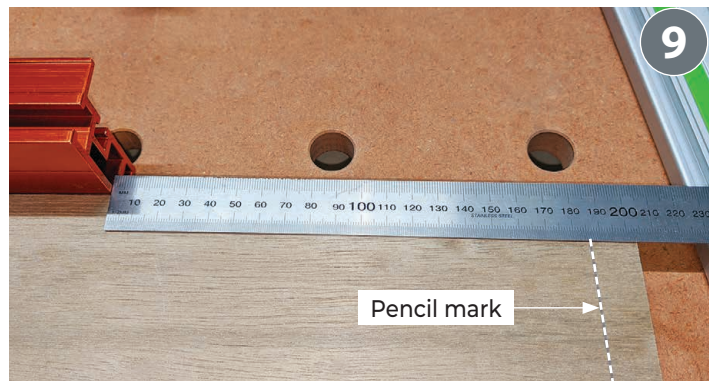
06. Secure the dogs in place using the hand knobs you removed earlier, from beneath the table.



07. Fit the flip over stop (D) to the T slot situated on the top of the fence rail (A).

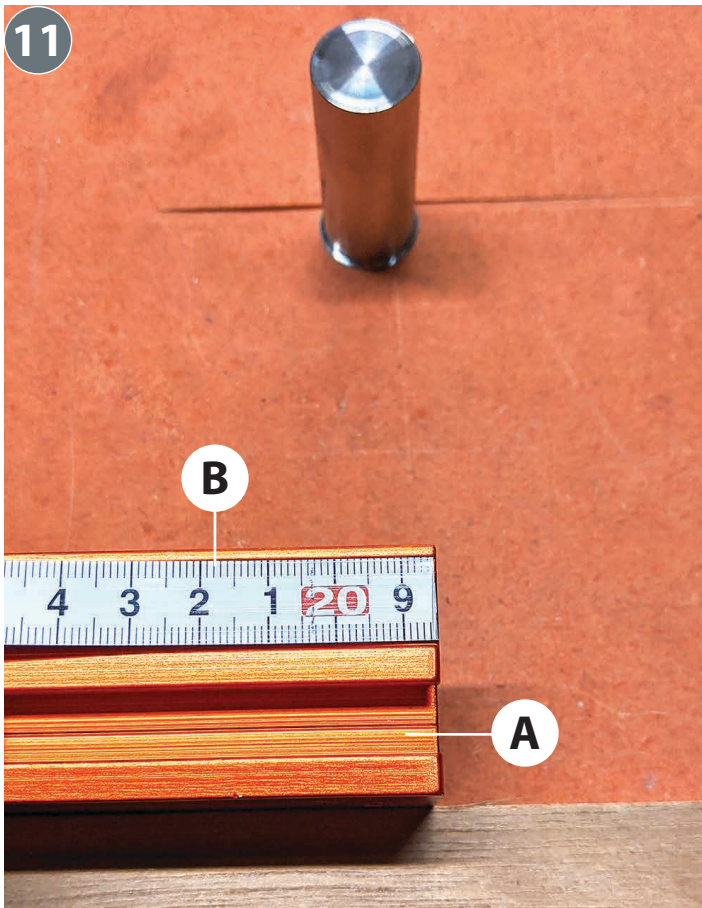


08. Find a straight edged piece of ply or planed timber, 4-500mm long and place it under your saw guide rail with the front edge protruding 50mm or so. Bring the flip over stop up to the rear edge to hold the ply or timber in place. Either run your saw to scribe a cut line, or draw a pencil mark against the sacrificial strip on the saw guide rail.

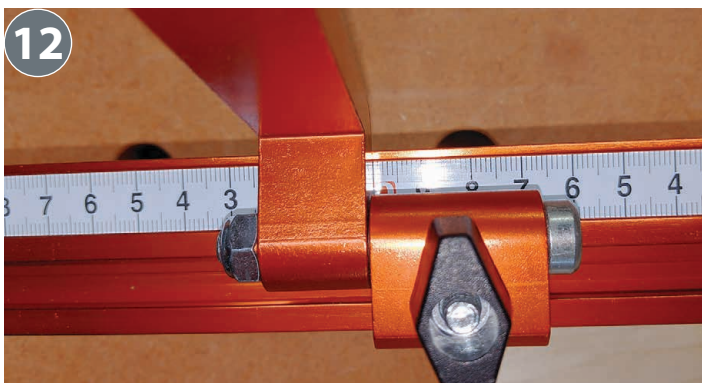


09-10. Remove the saw guide rail, carefully measure the distance between the scribed cut line or pencil mark to the front edge of the fence rail.

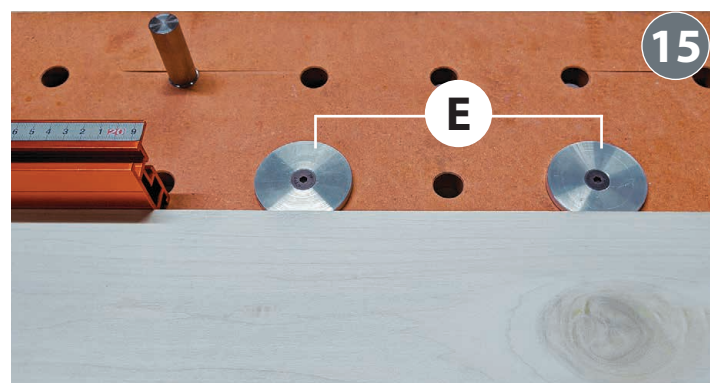
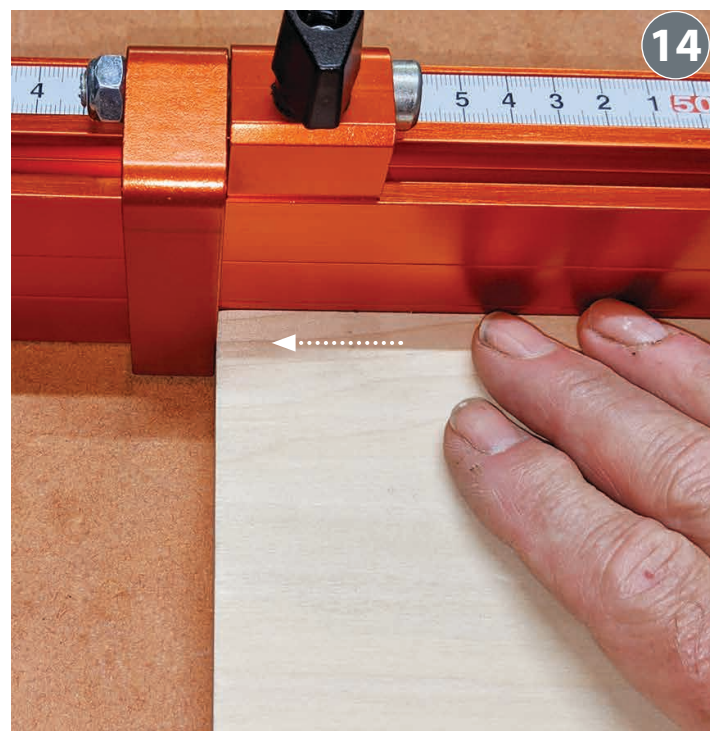
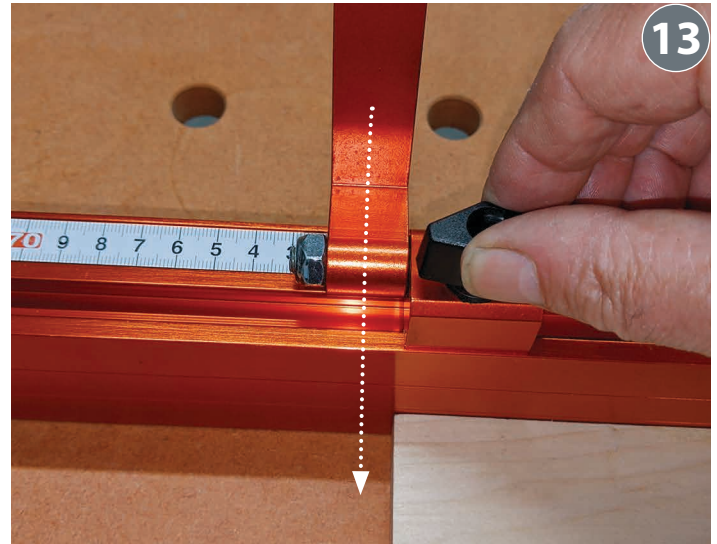
Assembly & Set-up



11. Cut the tape scale (B) to this measurement, i.e. 186mm. It may be worth temporarily sticking the tape in place with masking tape or similar and carry out some test cuts to check that the cut lengths are accurate. Once you are happy, peel off the backing strip from the tape scale and carefully fit it into the shallow slot on the top of the fence rail (A).



12-13-14. You can now set the flip over stop (D) to an exact cut length as shown.



15. There are two shallow workpiece support discs (E) that should be fitted as shown, leaving at least a single hole gap between them. On a typical grip hole table the single hole gap is where your cut line will be. The locating dogs for these discs are standard UJK Parf Anchor Dogs, which can also be used for creating an 8mm threaded hole in your worktop.



16-17. Refit your saw guide rail and you're ready to start cutting accurate lengths.



18. This UJK toggle clamp is a useful accessory for holding your workpiece securely.

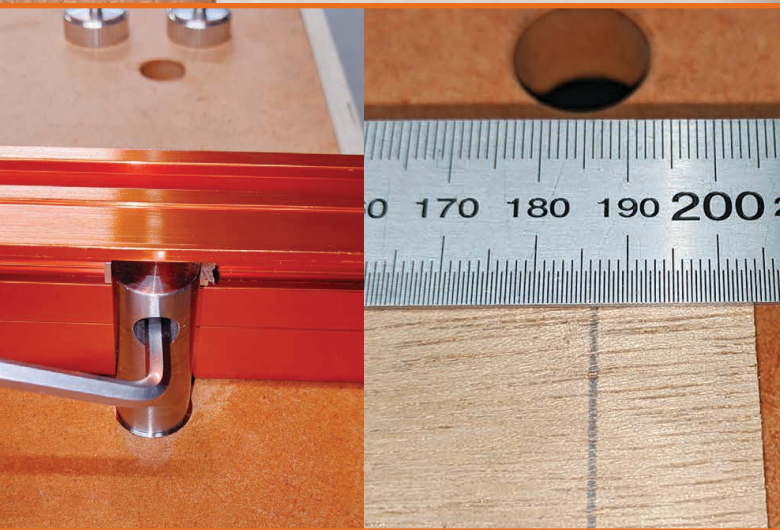
Notes



The UJK technology brand was launched by us in 2012 with the intention of encompassing a range of carefully selected products that we held in particular high esteem. Many of these products are designed by us and manufactured by one of our most trusted suppliers. The range includes routing, measuring and wood jointing products and has already proven extremely popular. We are continually striving to develop and increase this range of quality innovative products, so watch out for some even greater UJK technology designs and ideas.



Please dispose of packaging for the product in a responsible manner. It is suitable for recycling. Help to protect the environment, take the packaging to the local recycling centre and place into the appropriate recycling bin.



Axminster Tools, Axminster Devon EX13 5PH

axminstertools.com/ujk