



Code 107681

Original Instructions

AW50E 50L Portable Dust Collector




AT: 11/01/2023
BOOK VERSION: 05

INDEX OF CONTENTS

EU Declaration of Conformity	02
What's Included	03
General Instructions for 230V Machines	04
Specific Safety Instructions for Dust Extractors	05
Assembly	06
Specification	06
Illustration and Parts Description	06-07
Changing the Micron Paper Bag Filter	08-09
Optional Accessories / Maintenance	10-11
Exploded Diagrams/Lists	12-13
Wiring Diagram	14
Notes	15

EU DECLARATION OF CONFORMITY

<p>Cert No: DC-D</p> <p>Axminster Tool Centre Ltd Axminster Devon EX13 5PH UK axminstertools.com</p> <p>declares that the machinery described:-</p> <table border="1"> <tr> <td>Type</td> <td>Portable Dust Collector</td> </tr> <tr> <td>Model</td> <td>AW50E</td> </tr> </table> <p>Signed </p> <p>Andrew Parkhouse Operations Director</p> <p>Date: 25/03/2021</p>	Type	Portable Dust Collector	Model	AW50E	<p>EU Declaration of Conformity</p> <p>This machine complies with the following directives:</p> <p>2006/42/EC 2014/35/EU EN 60335-2-2:2010+A11:2002+A1:2013 EN 60335-1:2012+A11:2014+A13:2017+A1:2019+A14:2019+A2:2019 EN 62233:2008</p> <p>and conforms to the machinery example for which the EC Type-Examination Certificate No 2166AS03WAR38750 has been issued by Wendeng Allwin Power Equipment Co., Ltd. at: No.20-2 Sichan Road, Wendeng, Shandong, China</p> <p>and complies with the relevant essential health and safety requirements.</p>
Type	Portable Dust Collector				
Model	AW50E				

The symbols below advise the correct safety procedures when using this machine.



Fully read manual and safety instructions before use



Ear protection should be worn



Eye protection should be worn



Dust mask should be worn



HAZARD
Motor gets hot

WHAT'S INCLUDED

Quantity	Item	Part	Model Number
			AW50E
1	Dust Collector Assembly	A	
1	Instruction Manual		



A



HAVING UNPACKED YOUR DUST COLLECTOR, PLEASE DISPOSE OF ANY UNWANTED PACKAGING PROPERLY. THE PACKAGING IS BIODEGRADABLE.

The AC50E is a great entry level workshop vacuum extractor, just right for the home woodworker working from the small home workshop.

This machine has a 63mm inlet and will cope with waste dusts and chips from most benchtop machines and the smaller floor standing machines, especially bandsaws, circular saws, sanders, scroll saws etc.

There are adaptors to suit many machines. The power head has a grab carrying handle and is fixed to the drum with a metal quick release strap.

Fitted with a two stage filter comprising a cartridge filter and outer paper filter, this will provide filtration of 1 micron. This machine is a great alternative to your household vacuum cleaner.

GENERAL INSTRUCTIONS FOR 230V MACHINES

The following will enable you to observe good working practices, keep yourself and fellow workers safe and maintain your tools and equipment in good working order.



WARNING!! KEEP TOOLS AND EQUIPMENT OUT OF REACH OF YOUNG CHILDREN



KEEP WORK AREA AS UNCLUTTERED AS IS PRACTICAL. UNDER NO CIRCUMSTANCES SHOULD CHILDREN BE ALLOWED IN WORK AREAS.

Mains Powered Tools

- Tools are supplied with an attached 13 Amp UK 3 pin plug, fitted with 13 amp fuse.
- Inspect the cable and plug to ensure that neither are damaged. Repair if necessary by a suitably qualified person.
- Do not use when or where it is liable to get wet.

Workplace

- Do not use 230V a.c. powered tools anywhere within a site area that is flooded.
- Keep machine clean.

- Leave machine unplugged until work is about to commence.
- Always disconnect by pulling on the plug body and not the cable.
- Carry out a final check e.g. check the cutting tool is securely tightened in the machine and the correct speed and function set.
- Ensure you are comfortable before you start work, balanced, not reaching etc.
- Wear appropriate safety clothing, goggles, gloves, masks etc. Wear ear defenders at all times.
- If you have long hair wear a hair net or helmet to prevent it being caught up in the rotating parts of the machine.
- Consideration should be given to the removal of rings and wristwatches.
- Consideration should also be given to non-slip footwear etc.
- If another person is to use the machine, ensure they are suitably qualified to use it.
- Do not use the machine if you are tired or distracted.
- Do not use this machine within the designated safety areas of flammable liquid stores or in areas where there may be volatile gases.
- Check cutters are correct type and size, are undamaged and are kept clean and sharp, this will maintain their operating performance and lessen the loading on the machine.
- **OBSERVE....** make sure you know what is happening around you and **USE YOUR COMMON SENSE.**

SPECIFIC SAFETY INSTRUCTIONS FOR DUST EXTRACTORS

DO NOT use this machine as a vacuum cleaner, try to keep the waste medium to wood by-products.

DO NOT uplift workshop floor debris (stones, nails, screws, paper etc. Be aware that wood dust is an explosive medium.

DO NOT allow any 'naked light' source to occur anywhere near the machine. This includes cigarettes, matches etc. and do not place the machine near any unprotected light bulbs that could possibly get broken.

The suction force is generated by a high speed fan unit. This has the potential to amputate fingers, grab loose clothing (ties etc.) and 'bat' large chips etc at high speeds. Keep all guarding in place, and if access to the fan becomes necessary (due to blockage etc.), disconnect the machine from the mains supply and ensure the fan has come to a complete stop before putting your hands anywhere near it.

If you are not using 'clear' extraction hose, periodically remove the hose to check that the inlet to the machine is not getting restricted. The safety guard grill of the inlet duct can be particularly irksome in this way, as long strand shavings etc can wrap around the grill fret.

KEEP the particle filter clean. The machine relies on its ability to 'blow' air through the filter to generate good suction. If the particle filter starts to clog this reduces the air flow and the machine becomes less efficient.

The particle filter can be cleaned by using an 'M' class vacuum cleaner, clean the outside of the filter.

BE AWARE that in dry air periods or areas the movement of the air through the machine can generate static electric fields. These are not normally a problem as the machine is bonded together via its construction and the whole is earthed back through the electrical supply. Problems can occur however, with isolated items such as stands or hosing that are insulated from the ground (standing on rubber feet, suspended in the air etc). If possible, try to connect everything together electrically to eliminate static shocks. Use the integral metal coil in flexible hosing to connect the units together.

Try to route the power cable and the hosing away from busy walkways.



UNDER NO CIRCUMSTANCES SHOULD CHILDREN BE ALLOWED IN WORK AREAS. KEEP THE WORK AREA AS UNCLUTTERED AS IS PRACTICAL, THIS INCLUDES PERSONNEL AS WELL AS MATERIAL.



WARNING! KEEP TOOLS AND EQUIPMENT OUT OF THE REACH OF YOUNG CHILDREN.



ONLY USE DUST EXTRACTION BAGS WITH THIS MACHINE NOT DOMESTIC WASTE BAGS!

ASSEMBLY

The Dust Collector comes fully assembled straight out of the box. Using a hose clip, fit one of our recommended hoses or adapters to the 63mm inlet, see fig 01. See the range of accessories at axminstertools.com, in the catalogue or on pages 10-11.

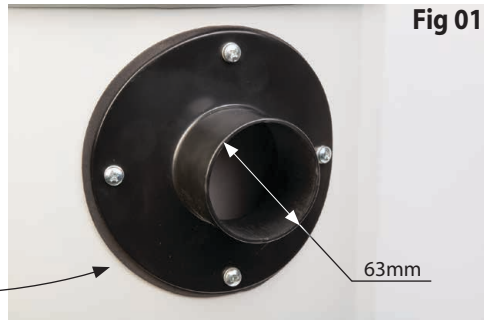


Fig 01

AC50E inlet

SPECIFICATION

Code	107681
Model	AW50E
Rating	Workshop
Power	1.2 kW 230V 50Hz 1ph
Duty Cycle	S1 1200W
Filtration	0.5 micron @ 99%
Noise Level	85 dB (A)
Airflow	440m ³ /hr
Air Volume	3,000 L/Min
Pressure	2,508 Pa
Container Volume	50 litre
Dust Extraction Inlet	63 mm
Overall L x W x H	420 x 420 x 730 mm
Weight	12.4 kg

ILLUSTRATION AND PARTS DESCRIPTION



Quick release strap



ON/Off switch

CHANGING THE MICRON PAPER BAG FILTER



DISCONNECT THE DUST COLLECTOR FROM THE MAINS SUPPLY!



WEAR A DUST MASK AND SAFETY GOGGLES BEFORE REMOVING THE MICRON BAG!

Step 1



• Release the quick release strap and lower the strap down.

Step 2



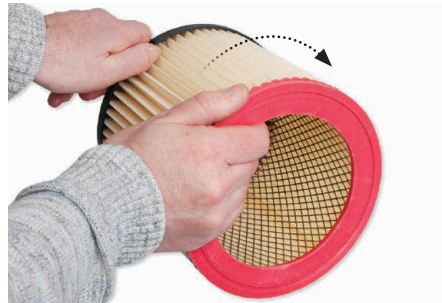
• Lift the motor assembly clear from the drum.

Step 3



• Remove the micron bag and filter from the motor assembly.

Step 4



• Remove the cartridge filter from the micron bag and clean the cartridge using an 'M' class vacuum cleaner. Check the condition of the cartridge for any signs of damage and replace if necessary, code 210092.

CHANGING THE MICRON PAPER BAG FILTER



**IF THE PAPER FILTER BECOMES
TORN DISPOSE OF IT IN THE
PROPER MANNER!**

Step 5



- Insert the cartridge filter into a new micron paper bag code 210091, tuck the paper down into the cartridge filter.

Step 6



- Replace the filter assembly so it's flush against the motor casing, lower the motor down into the drum and replace the quick release strap.

OPTIONAL ACCESSORIES



Code 210092 Filter Cartridge



Code 210091 Micron Paper Filter



Code 102572 Clear Reinforced PVC Hose 63mm x 2.5m



Code 102570 Axminster 2m x 63mm Extraction Hose Kit



Code 410063 63mm Dust Extraction Kit



Code 103337 Axminster 63mm Flex Form Hose Kit



Code 102573 Axminster 63mm-70mm Dust Extraction Cuff



Code 211999 Axminster Hose Fixing Clip 70-90mm



Code 510401 Jubilee Hose Clips



Code 102535 Axminster Tapered Step Hose Reducers 55-72mm



Code 103626 Axminster Hose Adaptor 100mm - 63mm



DISCONNECT THE DUST COLLECTOR FROM THE MAINS SUPPLY!



WEAR A DUST MASK AND SAFETY GOGGLES BEFORE CLEANING THE DUST COLLECTOR!

Daily

- Remove the motor assembly and empty the collection drum before it overflows; wear a dust mask whilst removing and emptying the drum.

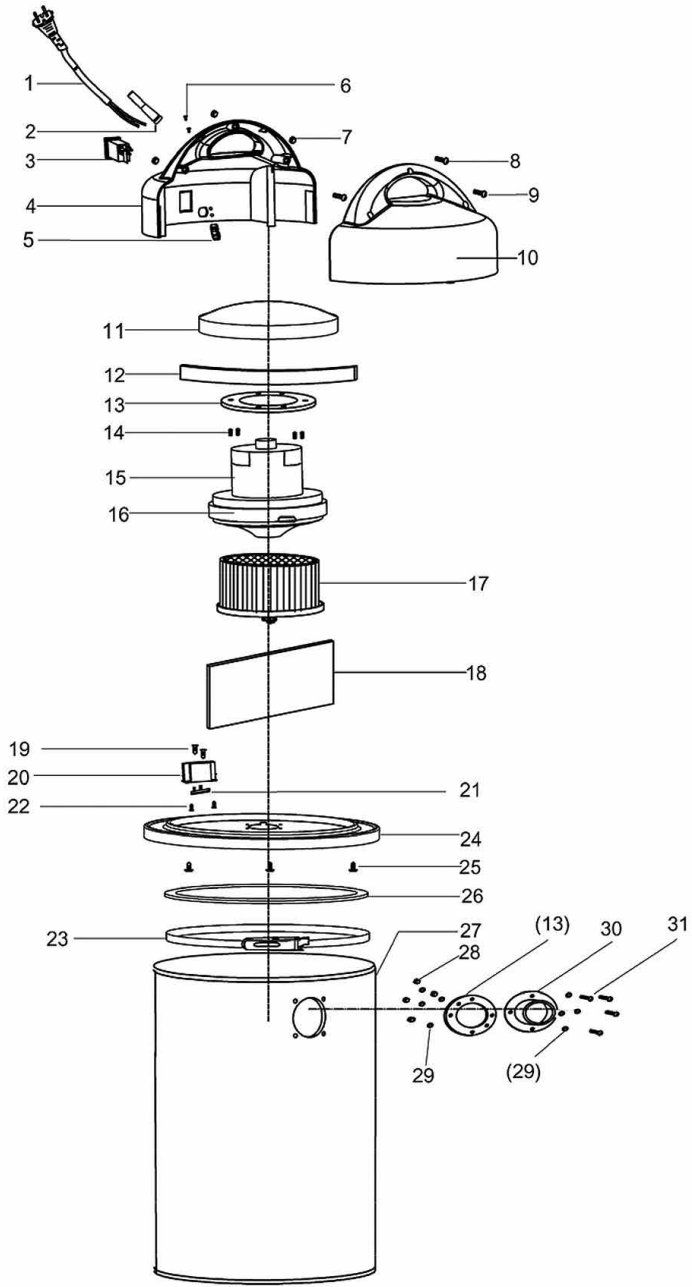
Weekly

- Check the inlet and outlet duct and remove any accumulated sawdust.
- Check the inlet hoses for splits and cracks; repair as necessary.
- Check the motor for dust, sawdust, shavings etc build up. If this has occurred, clean with an 'M' class vacuum cleaner.

Monthly

- Carry out the weekly checks.
- Dependent on usage clean the vacuum extractor using a damp cloth.

EXPLODED DIAGRAMS/LISTS

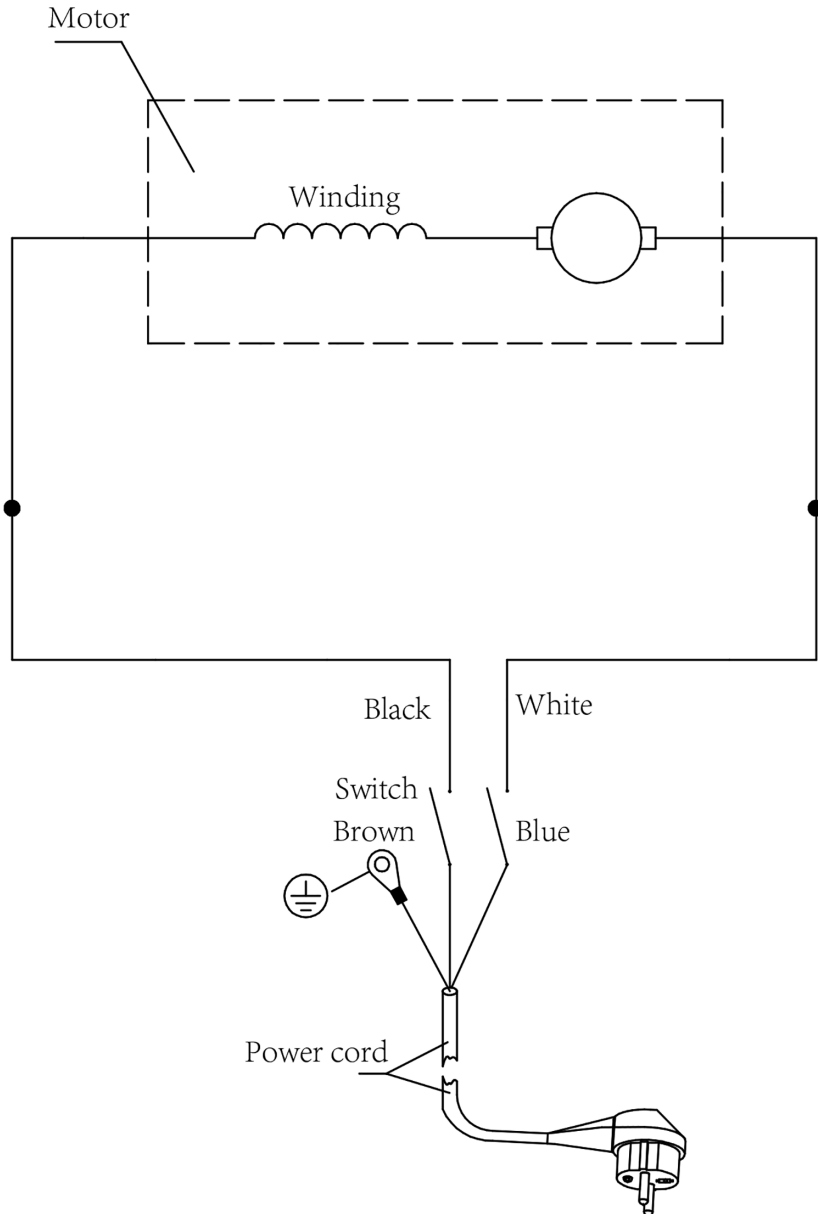


EXPLODED DIAGRAMS/LISTS

NO	Description	Spesification	QTY
1	Power cord		1
2	Cord bushing		1
3	Switch		1
4	Left guard		1
5	Strain relief plate		1
6	Phillips screw	M4 x 10	2
7	Nut	M5	3
8	Phillips screw	M5 x 25	1
9	Phillips screw	M5 x 45	2
10	Right guard		1
11	Circle sponge		1
12	Long sponge		1
13	Rubber washer		1
14	Phillips screw	M4 x 8	4
15	Motor		1
16	Sealing strip		1

17	Filter		1
18	Dust bag		1
19	Tapping screw	ST4.2 x 10	2
20	Transformer box		1
21	Circuit board		1
22	Tapping screw	ST4.2 x 10	2
23	Drum clamp		1
24	Drum cover		1
25	Tapping screw	ST5.5 x 18	3
26	Drum cover sealing strip		1
27	Drum		1
28	Lock nut	M6	4
29	Flat washer	D6	8
30	Suction inlet		1
31	Phillips screw	M6 x 16	4

WIRING DIAGRAM



The Axminster guarantee

Buy with confidence from Axminster!

So sure are we of the quality, we cover all parts and labour free of charge for three years!



For more information visit axminstertools.com/3years



The packaging is suitable for recycling.
Please dispose of it in a responsible manner.



EU Countries Only

Do not dispose of electric tools together with household waste material.
By law they must be collected and recycled separately.



Axminster Tools, Axminster Devon EX13 5PH

axminstertools.com