

AXMINSTER

WORKSHOP

Code 107683

Original Instructions

# AW150BB 150mm Buffing Machine




AT: 10/02/2022  
BOOK VERSION: 03

# INDEX OF CONTENTS

EU Declaration of Conformity	02
What's Included	03
General Instructions for 230V Machines	04
Specification	05
Assembly	05
Illustration and Parts Description	06
Changing the Buffing Mop	07
Optional Accessories	08-09
Maintenance	10
Exploded Diagrams/Lists	10-11
Wiring Diagram	10

## EU DECLARATION OF CONFORMITY

<p><b>Cert No: TLG-150BGB</b></p> <p>Axminster Tool Centre Ltd Axminster Devon EX13 5PH UK <a href="http://axminstertools.com">axminstertools.com</a> declares that the machinery described:-</p> <table border="1"> <tr> <td>Type</td> <td><b>Buffing Machine</b></td> </tr> <tr> <td>Model</td> <td><b>AW150BB</b></td> </tr> </table> <p>Signed </p> <p><b>Andrew Parkhouse</b> Operations Director</p>	Type	<b>Buffing Machine</b>	Model	<b>AW150BB</b>	<p><b>EU Declaration of Conformity</b></p> <p><b>This machine complies with the following directives:</b></p> <table> <tr> <td>2006/42/EC</td> <td>EN 61000-3-3:2013+A1:2019</td> </tr> <tr> <td>2014/30EU</td> <td>EN 55014-2:2015</td> </tr> <tr> <td>EN 55014-1:2017</td> <td>EN 62841-1:2015</td> </tr> <tr> <td>EN IEC 61000-3-2:2019</td> <td>EN 62841-3-4:2016+A11:2017+A12:2020</td> </tr> </table> <p>and conforms to the machinery example for which the EC Type-Examination Certificate No SHEM201000845601, SHES200801665601 has been issued by <b>Wendeng Allwin Motors Manufacturing Co., Ltd.</b> at: No. 15 Sichan Road Wendeng, Shandong, China 264400</p> <p>and complies with the relevant essential health and safety requirements.</p>	2006/42/EC	EN 61000-3-3:2013+A1:2019	2014/30EU	EN 55014-2:2015	EN 55014-1:2017	EN 62841-1:2015	EN IEC 61000-3-2:2019	EN 62841-3-4:2016+A11:2017+A12:2020
Type	<b>Buffing Machine</b>												
Model	<b>AW150BB</b>												
2006/42/EC	EN 61000-3-3:2013+A1:2019												
2014/30EU	EN 55014-2:2015												
EN 55014-1:2017	EN 62841-1:2015												
EN IEC 61000-3-2:2019	EN 62841-3-4:2016+A11:2017+A12:2020												

Date: **19/10/2021**

The symbols below advise the correct safety procedures when using this machine.



Fully read manual and safety instructions before use



Ear protection should be worn



Eye protection should be worn



Dust mask should be worn



**HAZARD**  
Motor gets hot

## WHAT'S INCLUDED

Quantity	Item	Part	Model Number
1	150mm Buffing Machine	<b>A</b>	AW150BB
4	Plate Washers	<b>B</b>	
2	Bushing Spacers	<b>C</b>	
2	12.7mm (1/2 inch) Bore Buffing Mops	<b>D</b>	
1	Instruction Manual		



Fitted with a 3 pin UK plug



**HAVING UNPACKED YOUR BUFFING MACHINE, PLEASE DISPOSE OF ANY UNWANTED PACKAGING PROPERLY. THE PACKAGING IS BIODEGRADABLE.**

This is a simple, long shaft polisher/buffing machine that mounts 150mm mops. Substantial and heavy for vibration free running, with a cast iron base with bolt hole locations for secure bench mounting.

The 1/2" (12.7mm) bore mops are mounted with retaining nuts rather than the usual "pig tail" spiral. Both a stitched and open mop are provided. Use with an appropriate compound to bring a real shine to your work.

- A simple, sturdy polishing and buffing machine
- Twin 150mm mops mounted on long spindles
- Heavy cast iron base for stability and smooth running
- Uses 1/2" bore mops, more secure and safer to use
- Many compounds and pastes available to create the finish you need

## GENERAL INSTRUCTIONS FOR 230V MACHINES

The following will enable you to observe good working practices, keep yourself and fellow workers safe and maintain your tools and equipment in good working order.



**WARNING!! KEEP TOOLS AND EQUIPMENT OUT OF REACH OF YOUNG CHILDREN.**



**KEEP WORK AREA AS UNCLUTTERED AS IS PRACTICAL. UNDER NO CIRCUMSTANCES SHOULD CHILDREN BE ALLOWED IN WORK AREAS.**

### Mains Powered Tools

- Tools are supplied with an attached 13 Amp UK 3 pin plug, fitted with 5 amp fuse.
- Inspect the cable and plug to ensure that neither are damaged. Repair if necessary by a suitably qualified person.
- Do not use when or where it is liable to get wet.

### Workplace

- Do not use 230V a.c. powered tools anywhere within a site area that is flooded.
- Keep machine clean.

- Leave machine unplugged until work is about to commence.
- Always disconnect by pulling on the plug body and not the cable.
- Carry out a final check e.g. check the cutting tool is securely tightened in the machine and the correct speed and function set.
- Ensure you are comfortable before you start work, balanced, not reaching etc.
- Wear appropriate safety clothing, goggles, gloves, masks etc. Wear ear defenders at all times.
- If you have long hair wear a hair net or helmet to prevent it being caught up in the rotating parts of the machine.
- Consideration should be given to the removal of rings and wristwatches.
- Consideration should also be given to non-slip footwear etc.
- If another person is to use the machine, ensure they are suitably qualified to use it.
- Do not use the machine if you are tired or distracted.
- Do not use this machine within the designated safety areas of flammable liquid stores or in areas where there may be volatile gases.
- Check cutters are correct type and size, are undamaged and are kept clean and sharp, this will maintain their operating performance and lessen the loading on the machine.
- **OBSERVE....** make sure you know what is happening around you and **USE YOUR COMMON SENSE.**

## SPECIFICATION

Code	107683
Model	AW150BB
Rating	Workshop
Power	370W 230V 50Hz
Duty Cycle	S1 250W
Spindle Speed	2,980 rpm
Weight	11 kg

## ASSEMBLY

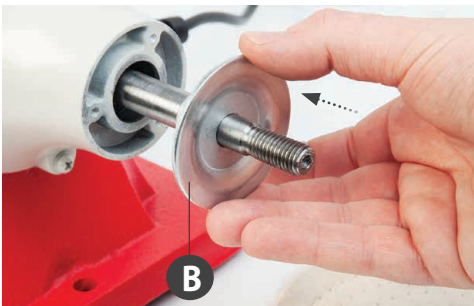
### Step 1



### Step 2



### Step 3



### Step 4



### Step 5



### Step 6



Replace the nut, remember left handed thread and tighten against the rotation of the buffing mop wheel.

# ILLUSTRATION AND PARTS DESCRIPTION



Work bench securing holes



ON/OFF switch

## CHANGING THE BUFFING MOP



**DISCONNECT THE BUFFING MACHINE FROM THE MAINS SUPPLY.**

### Step 1



Hold the mop in place and undo and remove the nut in the direction of the buffing mop.

### Step 2



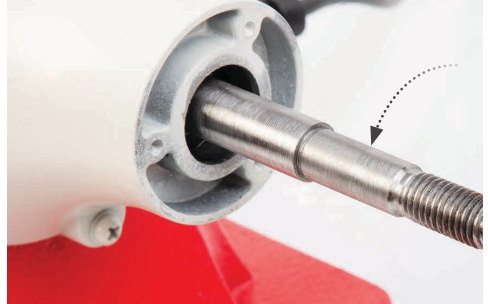
Remove the plate washer and place safely aside.

### Step 3



Remove the buffing mop and place safely aside.

### Step 4



Remove any build up of debris around the drive shaft to leave a clean surface.

### Step 4



Replace the inner plate washer, insert the mop onto the drive shaft so it is up against the inner plate washer and replace the outer plate washer/nut. Tighten the nut against the rotation of the buffing mop.



**RECONNECT THE BUFFING MACHINE TO THE MAINS SUPPLY AND CONTINUE OPERATION.**

## OPTIONAL ACCESSORIES

---

### Axminster Craft Flat Wheels



Flat Hard Wheel  
**Code 105857**



Polishing Mop Loose  
**Code 105868**



Polishing Mop Sisal  
**Code 105866**



Polishing Mop Stitched  
**Code 105867**

### Axminster Craft Nylon Abrasive Wheels



Nylon Fine Wheel  
**Code 105859**



Nylon Medium Wheel  
**Code 105862**



Nylon Coarse Wheel  
**Code 105863**



## OPTIONAL ACCESSORIES



Medium Polishing &  
Honing Paste 250g  
**Code 103703**



Fine Polishing &  
Honing Paste 250g  
**Code 103715**



Super Fine Polishing &  
Honing Paste 250g  
**Code 103716**



Axminster Acrylic Polish  
**Code 105761**



Axminster Yellow Polishing  
Compound  
**Code 105921**



Axminster Blue Polishing Compound  
**Code 105924**



Axminster Pink Polishing Compound  
**Code 105926**



Axminster Brown Polishing  
Compound  
**Code 105927**



Axminster Buff Polishing Compound  
**Code 105928**



Axminster Green Polishing Compound  
**Code 105929**



Axminster Red Polishing Compound  
**Code 105930**



Axminster Trade Final Finish  
Buffing Powder  
**Code 105763**

# MAINTENANCE

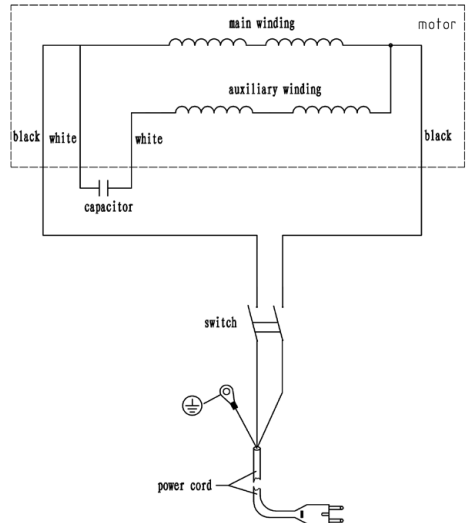
There is very little maintenance needed just keep an eye on the condition of polishing mops e.g. no torn or frayed edges that can cause the wheels to become unbalanced. Clean the buffing machine after use.

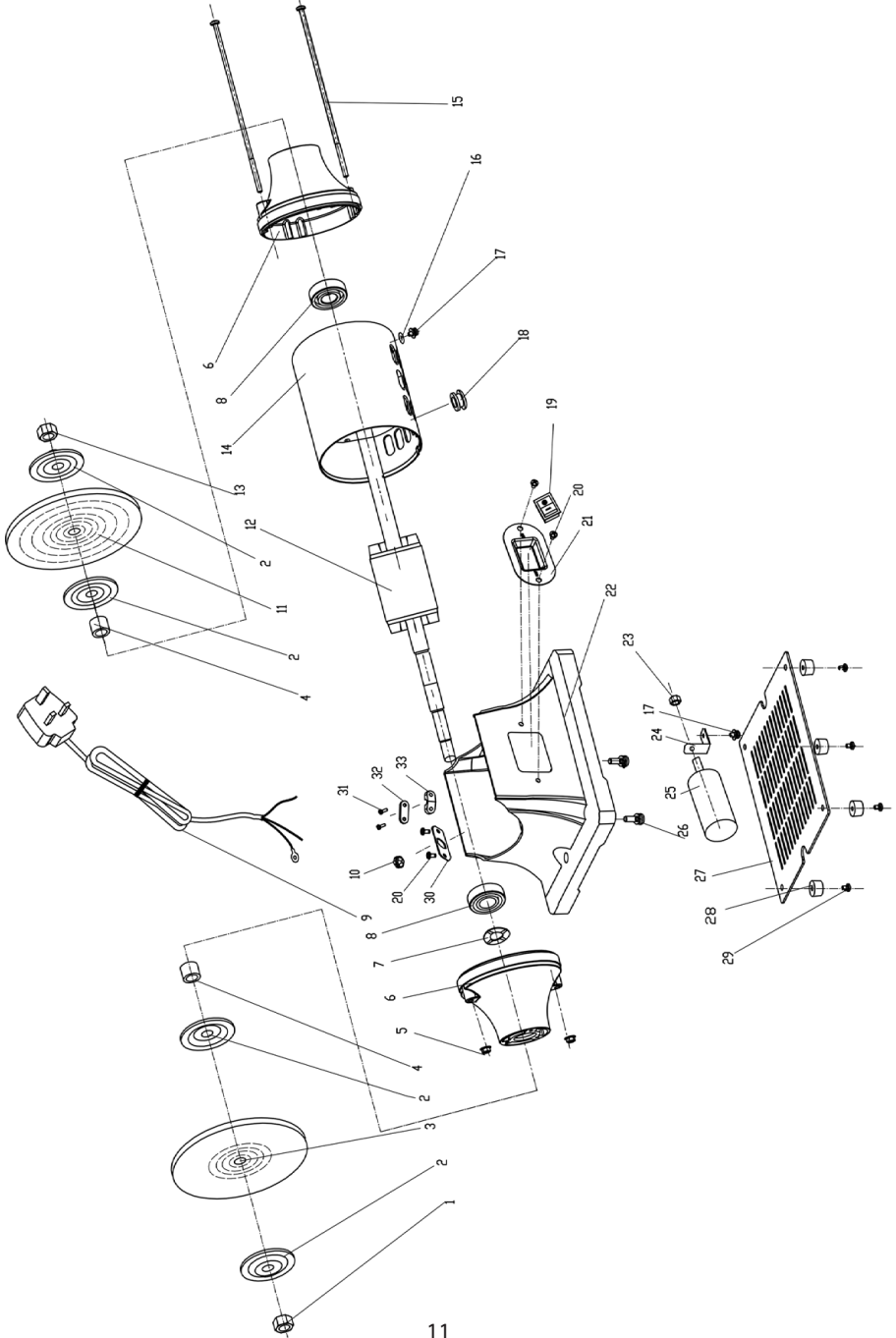
## EXPLODED DIAGRAMS/LISTS

No	Description	Specification	Qty
1	Hex Nut	M12 Left	1
2	Wheel Flange		4
3	Buffing Wheel	150x10 x12.7	1
4	Spacer		2
5	Hex Nut	M5	2
6	End cap		2
7	Wave Washer	D35	1
8	Ball Bearing	6202	2
9	Power cord with plug		1
10	Power cord clip		1
11	Stitched buffing wheel	150x10 x12.7	1
12	Rotor		1
13	Hex Nut	M12	1
14	Stator		1
15	Phillips Screw + flat washer assy	M5x200	2
16	Outer Toothed Locking Washer	D4	1
17	Phillips Screw +spring washer+flat washer assy	M4x8	2
18	Cord bushing		1
19	Switch		1
20	Phillips Screw	M5X8	2
21	Switch Plate		1
22	Base		1
23	Hex Nut	M8	1
24	Capacitor support		1
25	Anti-explosion Capacitor		1

26	Phillips Screw + spring washer assy	M6x20	2
27	Base cover		1
28	Rubber foot		4
29	Phillips Screw + flat washer assy	M4x12	4
30	Power cord clip subplate		1
31	Phillips Screw	M4X16	2
32	Strain Relief subplate		1
33	Strain Relief plate		1

## WIRING DIAGRAM





## The Axminster guarantee

Buy with confidence from Axminster!

So sure are we of the quality, we cover all parts and labour free of charge for three years!



For more information visit [axminstertools.com/3years](https://axminstertools.com/3years)

---



The packaging is suitable for recycling.  
Please dispose of it in a responsible manner.



### EU Countries Only

Do not dispose of electric tools together with household waste material.  
By law they must be collected and recycled separately.



Axminster Tools, Axminster Devon EX13 5PH

[axminstertools.com](https://axminstertools.com)