

APOHCG

Overhead Crown Guard



INDEX OF CONTENTS

Assembly

02-04

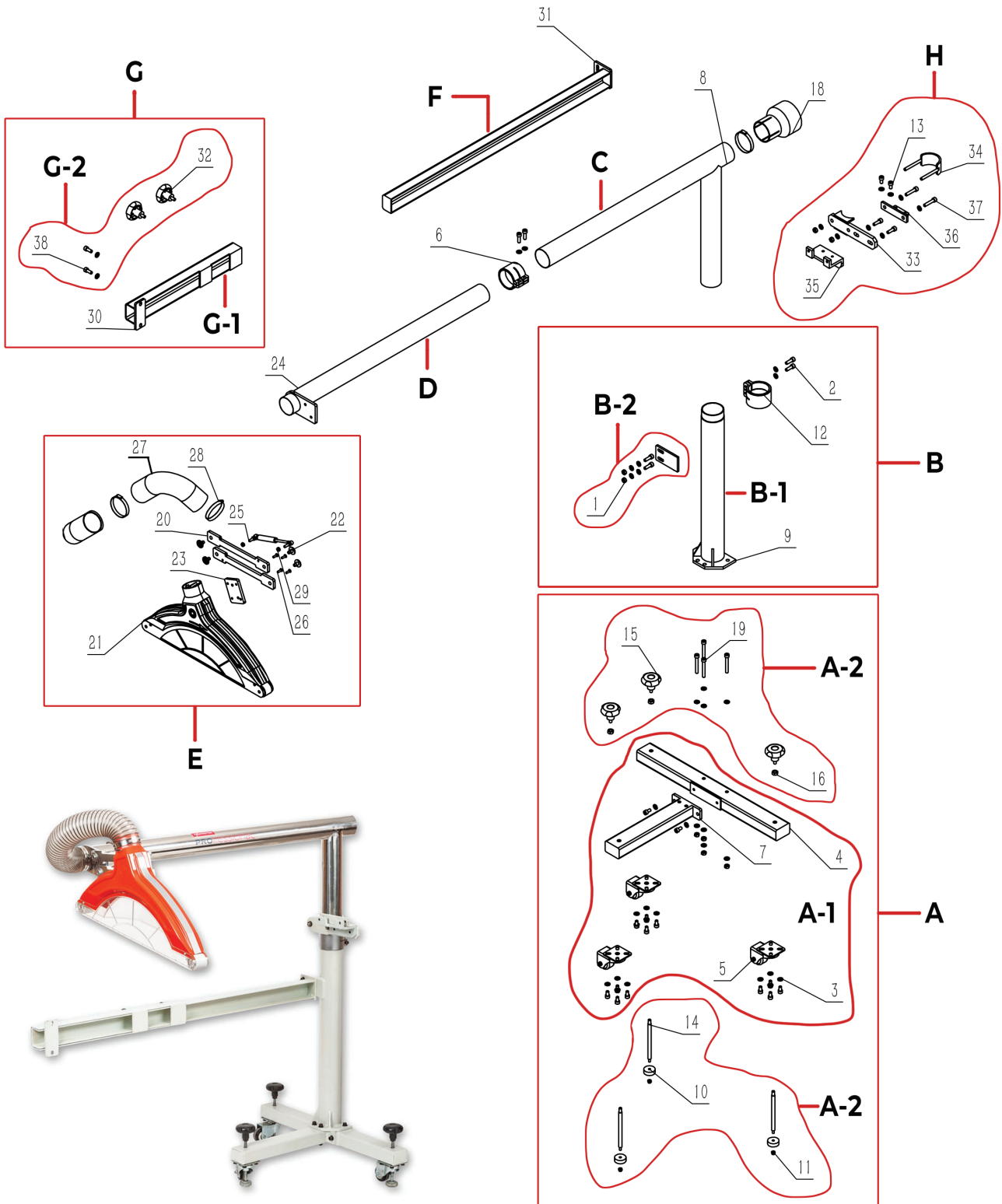
Attaching to the Saw

05-06

Exploded Diagram

07

ASSEMBLY



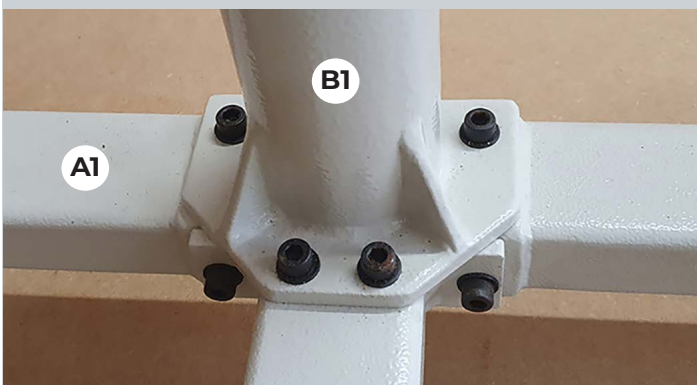
1. Thread the 3 levelling feet(A2) through the swivelling casters fitted to base frame (A1) from the underneath then thread on the nut & the knob. Lock nut & knob together, see fig 01-02.

Fig 01-02



2. Using the 4 x M8 x 60mm Cap bolts bolt the vertical column(B1) to base frame (A1), see fig 03.

Fig 03



3. Using 2 x M8 x 25mm Cap bolts, bolt the support arm (F) to the vertical column(B1), see fig 04-05.

Fig 04-05

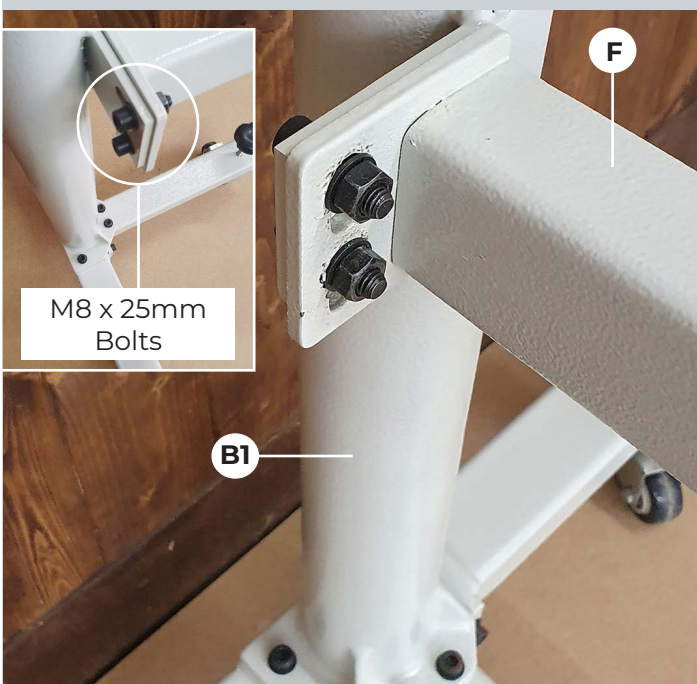
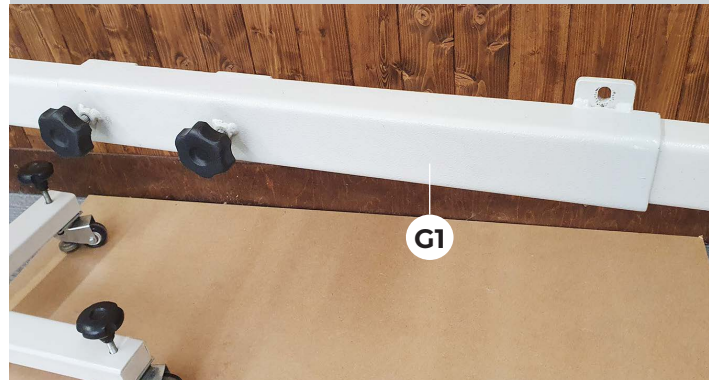
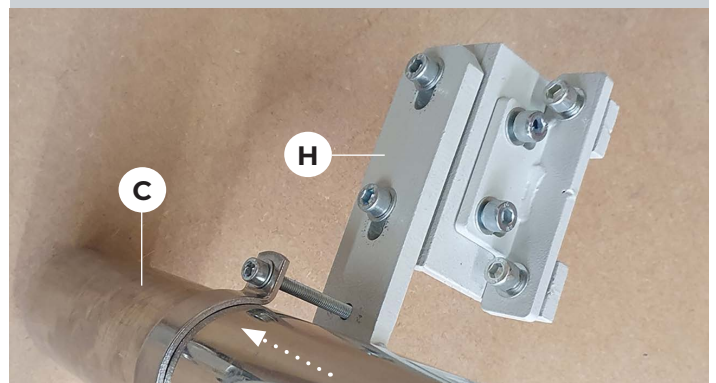


Fig 06



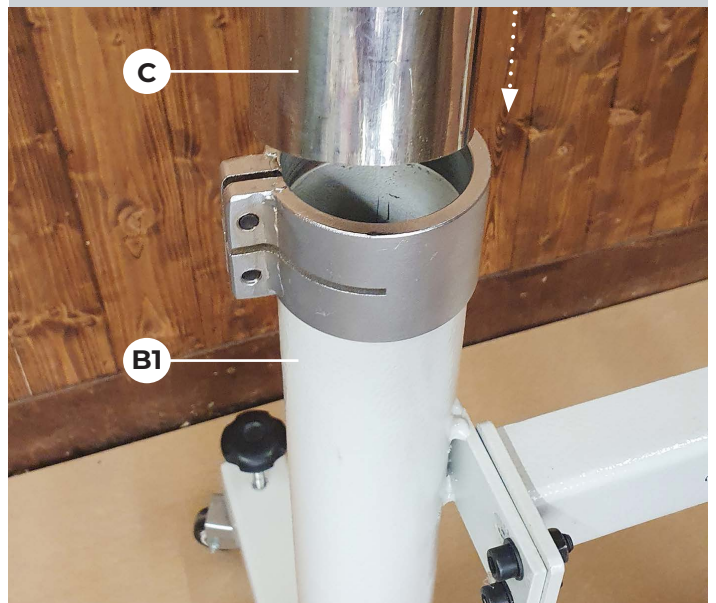
4. Slide the extending support bracket(G1) on to support arm (F), thread in loosely the 2 x M8 knobs, see fig 06

Fig 07



5. Slide the table clamp bracket assembly (H) over the chrome vertical guard support arm (C), lock loosely in place around halfway up, see fig 07.

Fig 08



6. Slide the chrome vertical guard support arm(C) into vertical column(B1), lock loosely in place with 2 x M8 x 25mm Cap bolts washers & nuts, see fig 08.

ASSEMBLY

Fig 09



Fig 10



7. Slide chrome horizontal extending guard support arm (D) into chrome vertical guard arm (C), lock in place with the guard mounting plate parallel to the floor, see fig 09-10.

8. Attach the guard (E) to the to the guard mounting plate using the 2 x M8 Cap bolts with bushes, tighten in place, see fig 11-12.

Fig 11

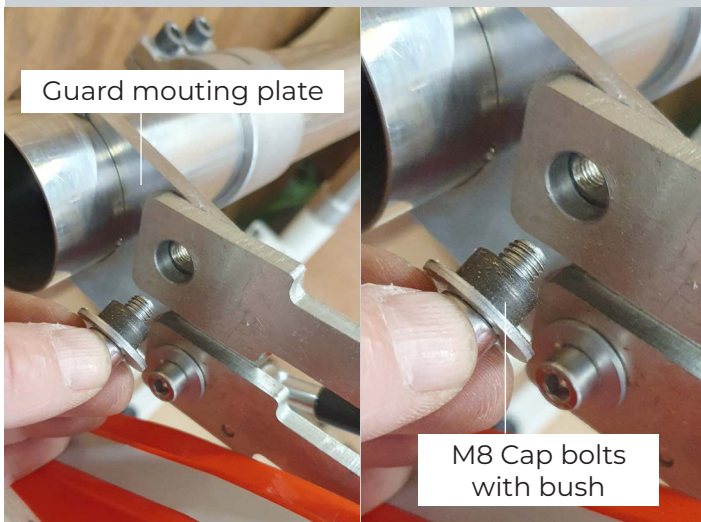
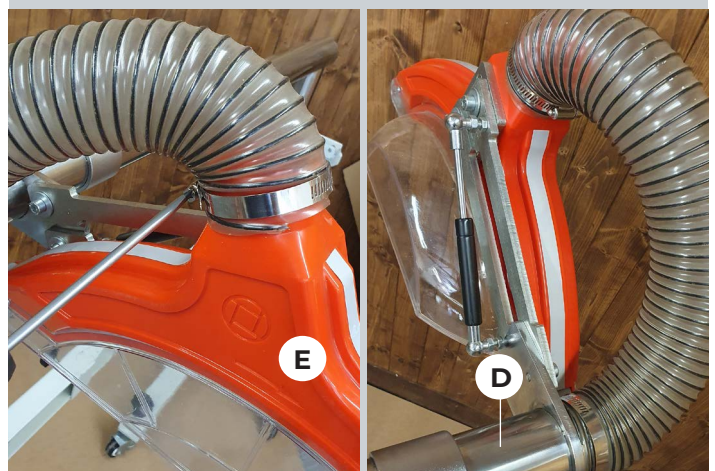


Fig 12

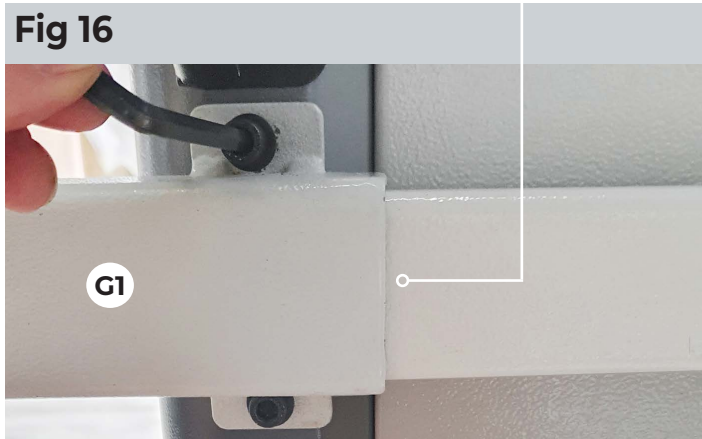


9. Connect the 63mm extraction hose to the guard(E) and the end of the chrome horizontal extending guard support arm(D) using the hose clips, see fig 13-14.

Fig 13-14



1. Lower the saw blade beneath the table.
2. Ensuring that the levelling feet(A2) are raised up, wheel the overhead guard kit to the table saw and position it on the far-right hand side of the saw and position the guard approximately over the table insert, see fig 15.

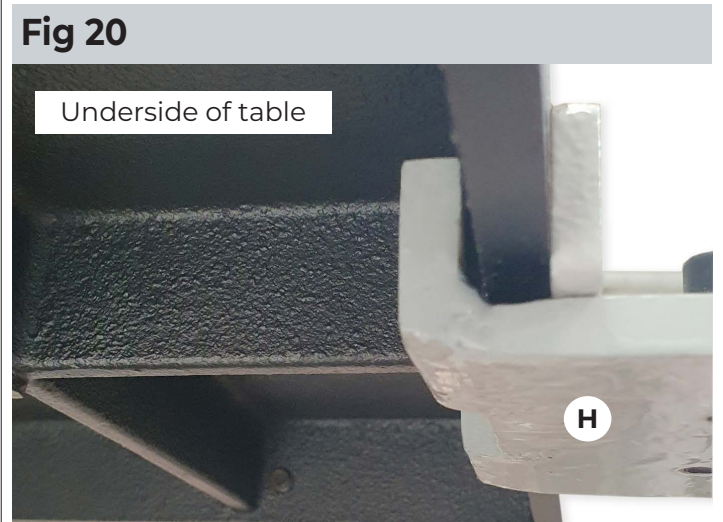
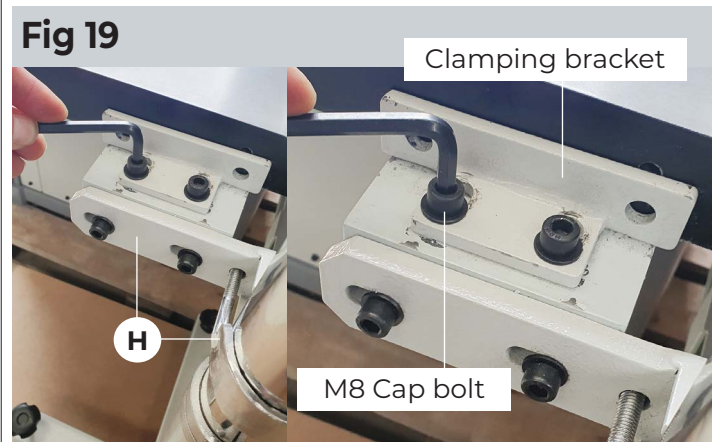


3. Connect the extending support bracket(G1) to the back of the saw with the x 2 M8 cap bolts, leaving the clamping knobs loose at this point, see fig 15-16.

4. Pivot the guard downwards then adjust the height of the column so that the guard makes light contact with the table, lock in place, see fig 17-18.

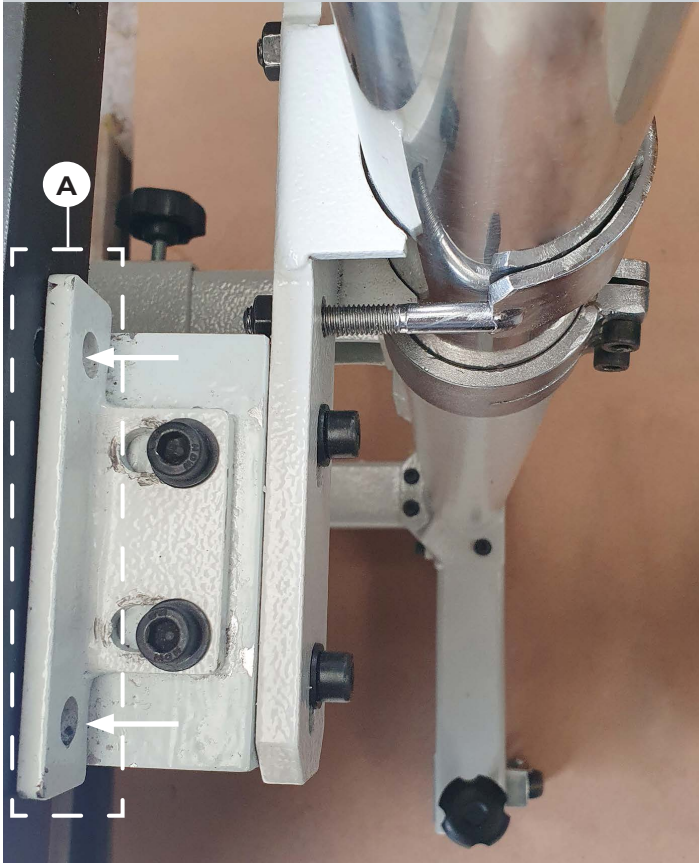


5. Lock the table clamping bracket assembly (H) against the table with the 2 x M8 Cap bolts, see fig 19-20. **Note:** the two holes (A) in the clamping bracket are not used, these holes are present to help retrofit the guard kit to other brand table saws, see fig 21 on page 06.



ATTACHING TO THE SAW

Fig 21



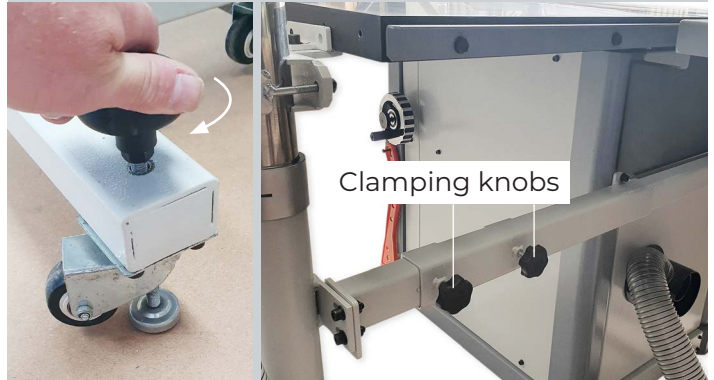
These holes are present to help retrofit the guard kit to other brand table saws.

6. Centralize & level the saw guard to the table insert & table, see fig 22.

Fig 22



Fig 23-24



7. Wind down the feet for extra stability & levelling then lock the 2 x M8 clamping knobs on the extending support bracket (G1), see fig 23-24.

8. Connect the 63mm hose, see fig 25.

Fig 25

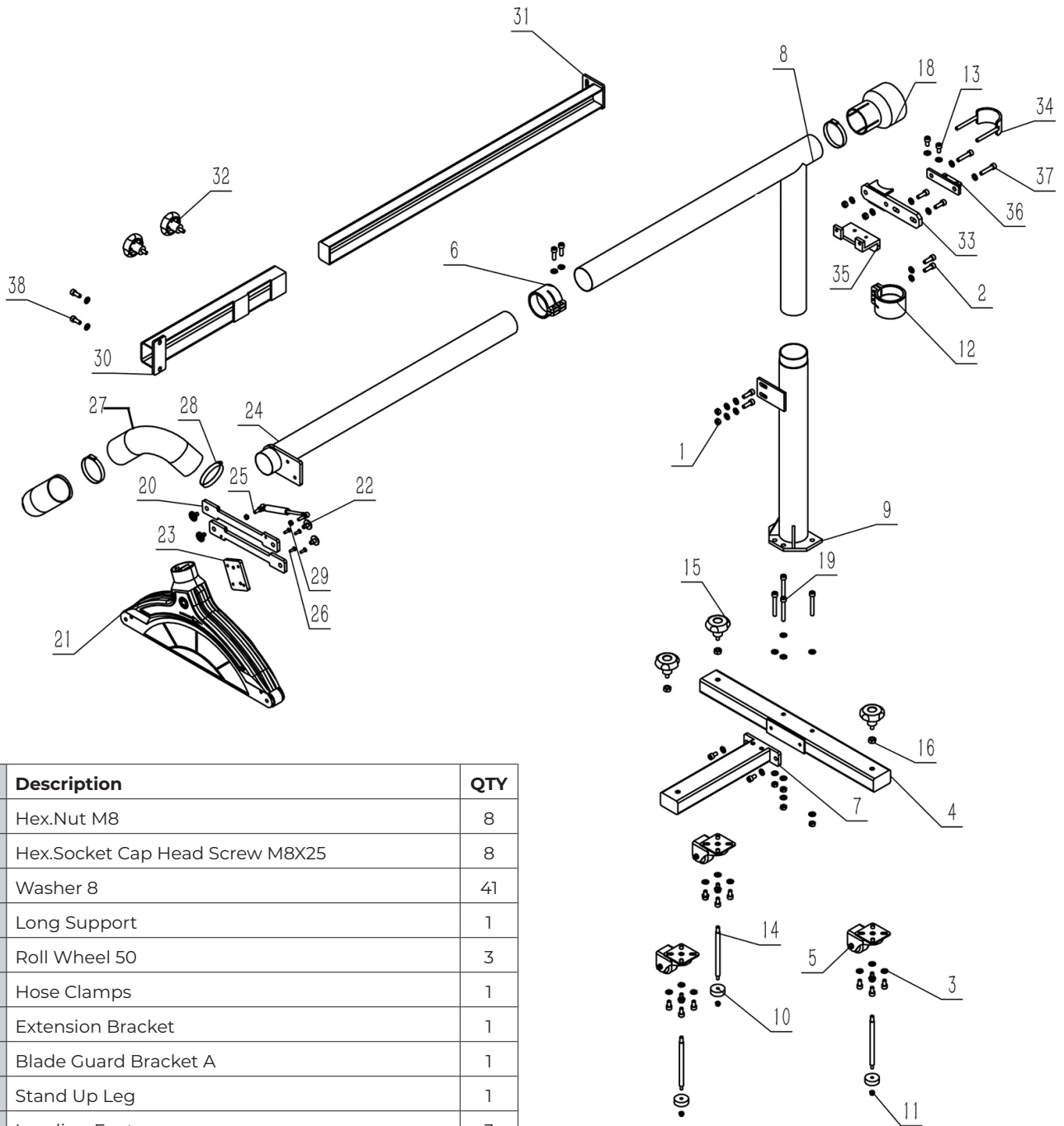


The AP254SB and AP3055SB come with a stub riving knife which is intended to be used when this guard is fitted, see fig 26.

Fig 26



EXPLODED DIAGRAM



No.	Description	QTY
1	Hex.Nut M8	8
2	Hex.Socket Cap Head Screw M8X25	8
3	Washer 8	41
4	Long Support	1
5	Roll Wheel 50	3
6	Hose Clamps	1
7	Extension Bracket	1
8	Blade Guard Bracket A	1
9	Stand Up Leg	1
10	Leveling Foot	3
11	Hex.Locking Nut M6	3
12	Locking Hose Hoop	1
13	Hex.Socket Cap Head Screw M8X16	17
14	Screw Rod, Foot	3
15	Locking Knob	3
16	Hex.Nut M10	3
19	Hex.Socket Cap Head Screw M8X25	4
20	Connection Board	2
21	Blade Guard	1
22	Step Bolt	4
23	Mounting Plate	1
24	Blade Guard Bracket B	1
25	Gas Spring	1

26	Hex.Socket Countersunk Screw M6X8	4
27	Dust Collection Hose	2
28	Hose Clamp 51-70	3
29	Hex.Nut M6	2
30	Supporting Bracket A	1
31	Supporting Bracket B	1
32	Locking Knob	2
33	Fixed Block	1
34	U Shape Clamp	1
35	Connection Block	1
36	Pad Board	1
37	Hex.Socket Cap Head Screw M8X40	2
38	Hex.Socket Cap Head Screw M8X20	2

The Axminster guarantee

Buy with confidence from Axminster Tools!

So sure are we of the quality, we cover all parts and labour free of charge for three years!



For more information visit axminstertools.com/3years



The packaging is suitable for recycling.
Please dispose of it in a responsible manner.



EU Countries Only

Do not dispose of electric tools together with household waste material.
By law they must be collected and recycled separately.



Axminster Tools, Axminster Devon EX13 5PH

axminstertools.com