



Universal Sub-Base Code 210118

Universal Sub-Base & Fixing Kit Code 718650

Original Instructions

# Universal Sub-Base



- Circular sub-base offers maximum versatility.
- Precision machined from aluminium with a low friction surface coating
- Designed to accept standard Axminster or Trend style guide bushes.
- Suitable for a wide range of routers; including Bosch, Makita, Elu, DeWalt, Festool, Trend, Ryobi, Hitachi etc.
- Fixing kit is included to cover a variety of thread types.
- 176mm diameter x 7mm thick.



**UJK Fixing Kit for Router & Jigs**  
Code 508626



**UJK Stainless Steel Guide Bushes**

AT: 3/3/2024  
BOOK VERSION: 11

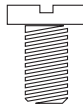
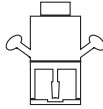
## INTRODUCTION

Some routers can be difficult to match up with suitable guide bushes and a universal sub base can be the only solution. A round base can be preferable in many circumstances too. The UJK Universal Sub Base is precision machined from aluminium and fitted with a low friction surface for ease of use. It is designed to

accept standard Axminster or Trend style guide bushes and holes for these are drilled with an M4 thread. It is also designed for mounting to a very wide range of different routers, including Bosch, Makita, Elu, Dewalt, Festool, Trend, Ryobi and Hitachi models to name a few. Dimensions: 176mm diameter x 7mm thickness.

### Router Chart

#### Router Model



<b>BOSCH</b>	GOF1600,1700ACE POF52,	1	Fx2
	400,500A,600ACE	3	Fx2
	POF800ACE,GOF900A <2003	4	Gx3
	GOF1300ACE,900A>2003	5	Gx3
	GMF1400	0	1x4
	GMF1600CE	19	1x3
<b>CMT</b>	CMT1E,CMT2E,CMT7E	1	Fx2
<b>DEWALT</b>	DW613,614,615,620,621,	1	Fx2
	DW625EK,629, DW625KT	1	Fx2
<b>DRAPER</b>	RI900V	2	Fx3
	PT1200V	1	Fx3
<b>ELU</b>	OF97(E),MOF177(E),131,98,	1	Fx2
	MOF77,96(E) MK2,69'	1	Fx2
<b>FELISATTI</b>	R346EC	1	Ex2
	TP246 (E)	6	Ex2
<b>FESTOOL</b>	OF2000(E)	7	Ex3
	OF1E,900(E),1000(E), OF1010	8	Bx4 & Ax3
	OF1400 EBQ-Plus	23	Hx2
<b>FREUD</b>	FT1000(E),2000E	2	Fx3
<b>HITACHI</b>	FM8,ZK2008	9	Ex2
	M8(V)	10	Dx4
	M12V,M12SA	11	Dx4
	TR12	11 & 12	Dx4
<b>HIKOKI</b>	M12VE	11	Dx4
<b>MAFELL</b>	L050E	8	Bx4
	LO65EC	3	Dx2
	LO55	21 & 2	Dx2
<b>MAKITA</b>	3620,3612BR,3600B	13	Dx2
	3612(C)	14	Ex2
	RP0910,1110C	1	Fx2
	RP2301FCX	22	Bx4
<b>PRO</b>	CLM1250R >11/03,CLM2050R	1	Fx2
<b>PERLES</b>	OF808(E)>1999',2-808(E)	1	Hx2
	OF9(E)	1	Hx2
<b>PEUGEOT</b>	DEF570E,DF55E	15	Ex2
<b>RYOBI</b>	RE600N,R600N,RE601	13	Dx2
	ERT1500V	13	Dx2
	R500,502	16	Ax4
	R150,151,RE120,155K	15	Ex2
<b>SKIL</b>	1835U,1875U1	17	Cx3
<b>TREND</b>	T3,T4,T5,T5MK2',T9,T10,T11,	1	Hx2
	T7EK*	10	Ax2
<b>TRITON</b>	TRA001	21	1/4" UNC 6.35mm
<b>WADKIN</b>	R500	16	Ax4

\* Requires 4 x M4 washers. 2 underneath each screw



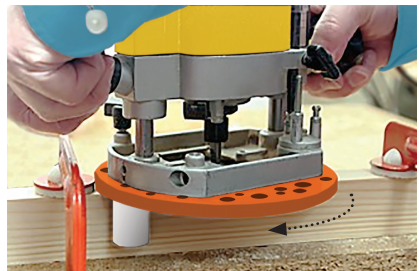
Remove the routers base plate and place safely away.



**Setup 1:** Lineup the holes in the sub-base plate with the holes in your router and secure in place. Mount the guide bush to the centre of the sub-base with two countersink screws.



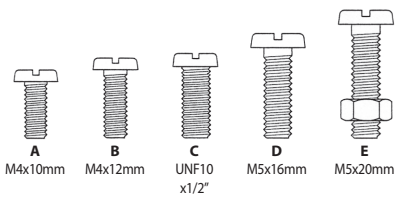
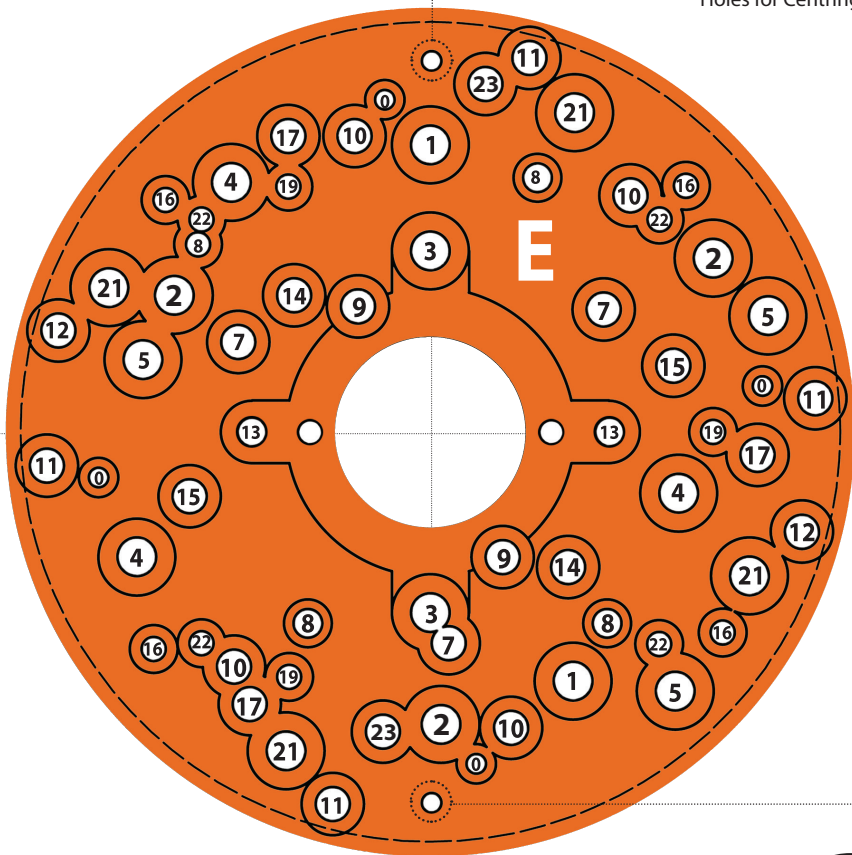
**Setup 2:** Mount the centring pegs on to the base plate.



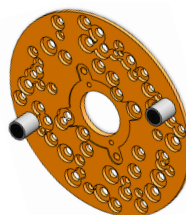
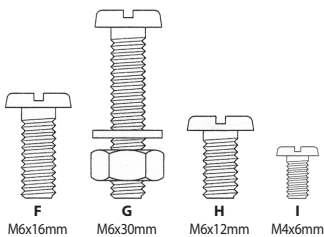
Position the router over the workpiece and rotate until the centring pegs are against the side of the timber, this centres the router bit. The centring pegs also steady the cut acting as stabilisers preventing the router from tilting.

# UNIVERSAL BASE PLATE

Holes for Centring Pegs



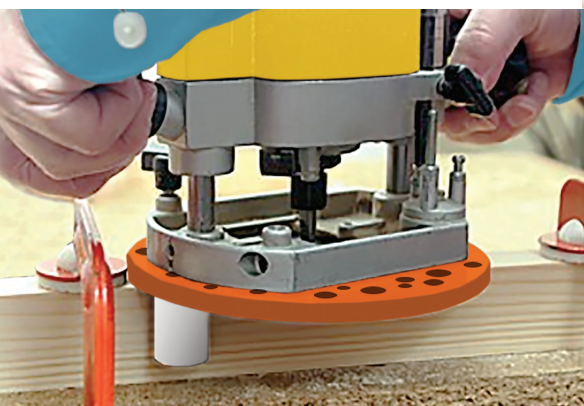
**UJK Stainless Steel Guide Bushes**  
(Available Separately)



**Base Plate Self Centring Pegs**



The UJK brand was launched by Axminster in 2012 with the intention of encompassing a range of carefully selected products that Axminster held in particular high esteem. Many of these products are designed by and manufactured by Axminster. The range includes routing, measuring and wood jointing products and has proven to be extremely popular. Axminster continually strive to develop and increase the range of quality, innovative products.



Axminster Tools, Axminster, Devon, EX13 5PH

[axminstertools.com/ujk](http://axminstertools.com/ujk)