

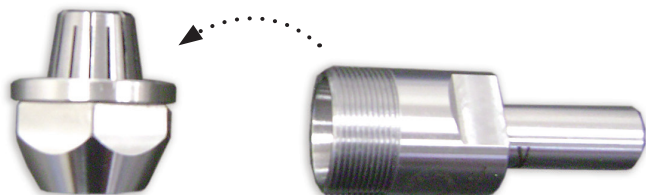


## Router Collet Extension (1/2" Shank)

### Changing the Collet

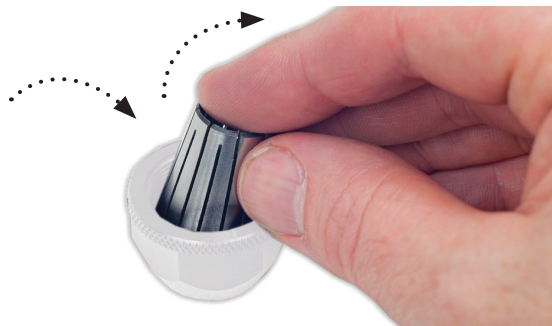
Code 211367

1



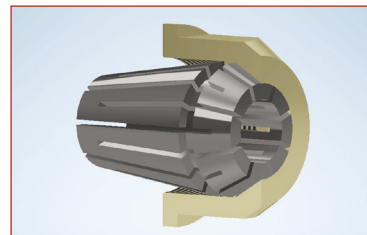
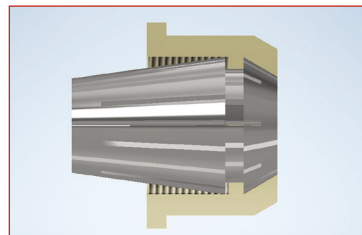
Remove the collet holder nut from the main body.

2



Pull the collet towards you to remove it from the holder.

3



Insert the new collet down into the nut, making sure the collet is seated correctly into the holder, you will hear it 'Click' home.

4



Re-attach the collet holder nut to the main body.

