

CT-502H Extractor



GENERAL SAFETY INSTRUCTIONS FOR MACHINES

Extreme caution should be used when operating all power tools. Know your power tool, be familiar with its operation, read through the owner's manual and practice safe usage procedures at all times.

- **ALWAYS** read and understand the user manual before operating the machine.
- **CONNECT** your machine **ONLY** to the matched and specific power source.
- **ALWAYS** wear safety glasses respirators, hearing protection and safety shoes, when operating your machine.
- **DO NOT** wear loose clothing or jewelry when operating your machine.
- **A SAFE ENVIRONMENT** is important. Keep the area free of dust, dirt and other debris in the immediate vicinity of your machine.
- **BE ALERT! DO NOT** use prescription or other drugs that may affect your ability or judgment to safely use your machine.
- **DISCONNECT** the power source when changing drill bits, hollow chisels, router bits, shaper heads, blades, knives or making other adjustments or repairs.
- **NEVER** leave a tool unattended while it is in operation.
- **NEVER** reach over the table when the tool is in operation.
- **ALWAYS** keep blades, knives and bits sharpened and properly aligned.
- **ALL OPERATIONS MUST BE** performed with the guards in place to ensure safety.
- **ALWAYS** use push sticks, feather boards or other safety devices to safely feed your work through the machine.
- **ALWAYS** make sure that any tools used for adjustments are removed before operating the machine.
- **ALWAYS** keep the bystanders safely away while the machine is in operation.
- **NEVER** attempt to remove jammed cutoff pieces until the saw blade has come to a full stop.
- **NEVER** expose the machine to rain. Store the machine in a safe & dry place.

WARNING!

The safety instructions given above can not be complete because the environment in every shop is different. Always consider safety first as it applies to your individual working conditions.

ELECTRICAL REQUIREMENTS

BEFORE CONNECTING THE MACHINE TO THE POWER SOURCE, VERIFY THAT THE VOLTAGE OF YOUR POWER SUPPLY CORRESPONDS WITH THE VOLTAGE SPECIFIED ON THE MOTOR I.D. NAMEPLATE. A POWER SOURCE WITH GREATER VOLTAGE THAN NEEDED CAN RESULT IN SERIOUS INJURY TO THE USER AS WELL AS DAMAGE TO THE MACHINE. IF IN DOUBT, CONTACT A QUALIFIED ELECTRICIAN BEFORE CONNECTING TO THE POWER SOURCE. THIS TOOL IS FOR INDOOR USE ONLY. DO NOT EXPOSE TO RAIN OR USE IN WET OR DAMP LOCATIONS.

GROUNDING INSTRUCTIONS

This appliance must be grounded. If it should malfunction or breakdown, grounding provides a path of least resistance for electric current to reduce the risk of electric shock. This appliance is equipped with a cord having an equipment-grounding conductor and grounding plug. The plug must be inserted into an appropriate outlet that is properly installed and grounded in accordance with all local codes and ordinances.

WARNING – Improper connection of the equipment-grounding conductor can result in a risk of electric shock. Check with a qualified electrician or service person if you are in doubt as to whether the outlet is properly grounded. Do not modify the plug provided with the appliance – if it will not fit the outlet, have a proper outlet installed by a qualified electrician.

This appliance is for use on a circuit having a nominal rating more than 120 V and is factory-equipped with a specific electric cord and plug to permit connection to a proper electric circuit. Make sure that the appliance is connected to an outlet having the same configuration as the plug. No adaptor should be used with this appliance. If the appliance must be reconnected for use on a different type of electric circuit, the reconnection should be made by qualified service personnel.

DO NOT MODIFY THE PLUG PROVIDED!

If it will not fit your receptacle, have the proper receptacle installed by a qualified electrician. CHECK with a qualified electrician or service person if you do not completely understand these grounding instructions, or if you are not sure the tool is properly grounded.

CIRCUIT CAPACITY

Make sure that the wires in your circuit are capable of handling the amperage draw from your machine, as well as any other machines that could be operating on the same circuit. If you are unsure, consult a qualified electrician. If the circuit breaker trips or the fuse blows regularly, your machine may be operating on a circuit that is close to its amperage draw capacity. However, if an unusual amperage draw does not exist and a power failure still occurs, contact a qualified technician or our service department.

EXTENSION CORDS

If you find it necessary to use an extension cord with your machine, use only 3-wire extension cords that have 3-prong grounding plug and a matching 3-pole receptacle that accepts the tool's plug. Repair or replace a damaged extension cord or plug immediately.

Make sure the cord rating is suitable for the amperage listed on the motor I.D. plate. An undersized cord will cause a drop in line voltage resulting in loss of power and overheating. The accompanying chart shows the correct size extension cord to be used based on cord length and motor I.D. plate amp rating. If in doubt, use the next heavier gauge. The smaller the number the heavier the gauge.

IMPORTANT SAFETY INSTRUCTIONS

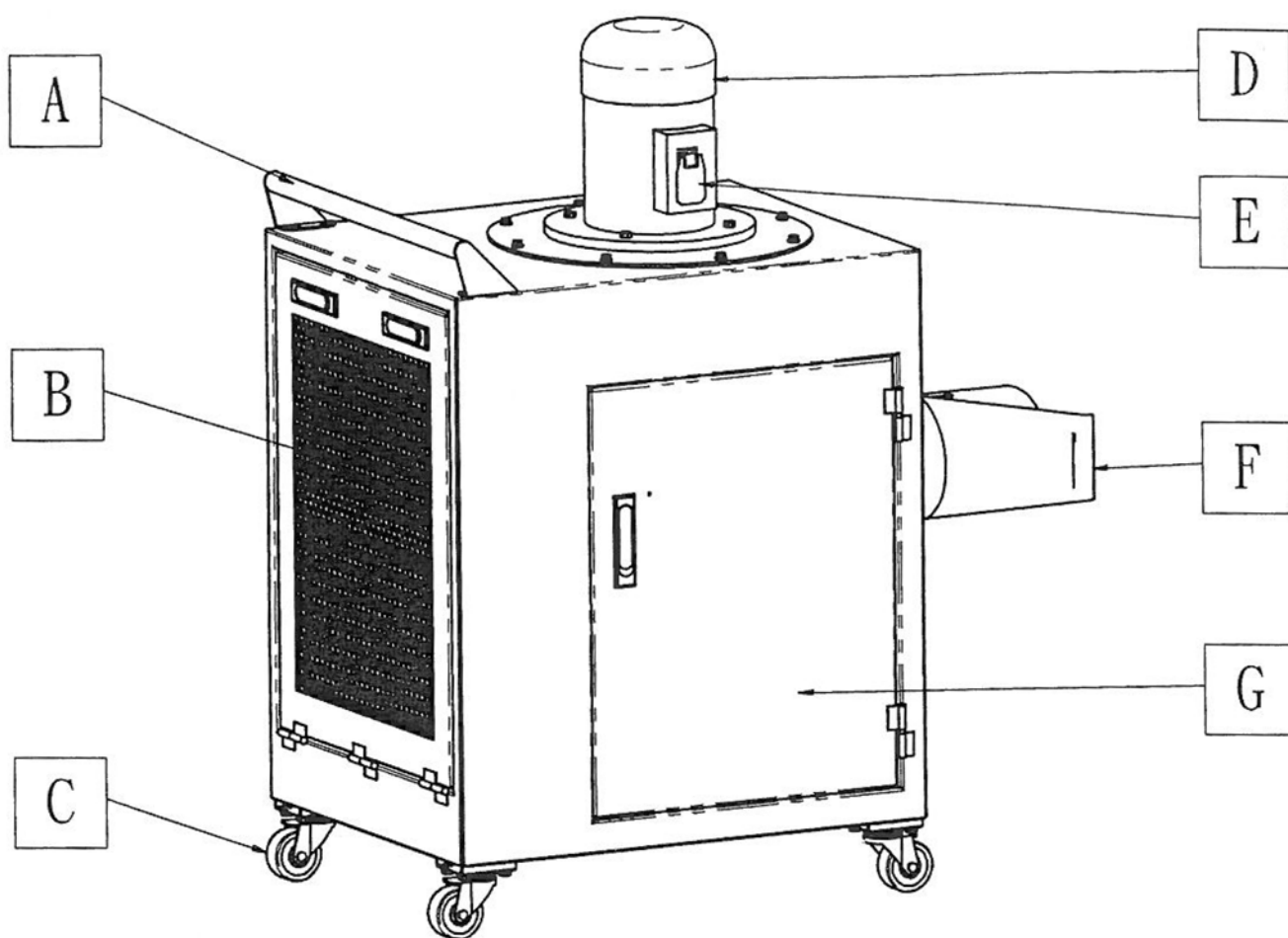
When using an electrical appliance, basic precautions should always be followed, including the following:

READ ALL INSTRUCTIONS BEFORE USING (THIS APPLIANCE)

WARNING – To reduce the risk of fire, electric shock, or injury:

1. Do not leave appliance when plugged in. Unplug from outlet when not in use and before servicing.
2. Do not use outdoors or on wet surfaces.
3. Do not allow to be used as a toy. Close attention is necessary when used by or near children.
4. Use only as described in this manual. Use only manufacturer's recommended attachments.
5. Do not use with damaged cord or plug. If appliance is not working as it should, has been dropped, damaged, left outdoors, or dropped into water, return it to a service center.
6. Do not pull or carry by cord, use cord as a handle, close a door on cord, or pull cord around sharp edges or corners. Do not run appliance over cord. Keep cord away from heated surfaces.
7. Do not unplug by pulling on cord. To unplug, grasp the plug, not the cord.
8. Do not handle plug or appliance with wet hands.
9. Do not put any object into openings. Do not use with any opening blocked; keep free of dust, lint, hair, and anything that may reduce air flow.
10. Keep hair, loose clothing, fingers, and all parts of body away from openings and moving parts.
11. Turn off all controls before unplugging.
12. Use extra care when cleaning on stairs.
13. Do not use to pick up flammable or combustible liquids, such as gasoline, or use in areas where they may be present.
14. For a grounded appliance: "Connect to a properly grounded outlet only. See Grounding Instructions."
15. This appliance is intended for household use.

SAVE THESE INSTRUCTIONS



A: HANDLE

B: FILTER

C: CASTER

D: MOTOR

E: SWITCH

F: Y-INLET

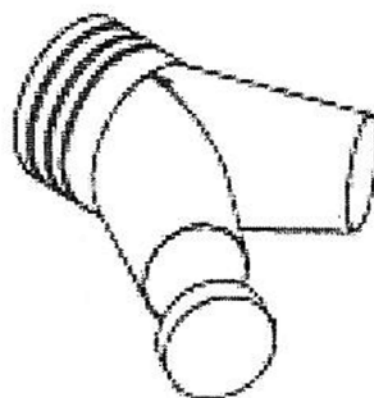
G: DOOR

UNPACKING

The machine is properly packaged and shipped completely in a box for safe transportation. When unpacking, carefully inspect the box and ensure that nothing has been damaged during transit. Open the box and check that the machine and the parts are in good condition.

NOTICE

While doing inventory, if you can not find any part, check if the part has already been installed on the machine. Some parts come pre-assembled for shipping purposes.



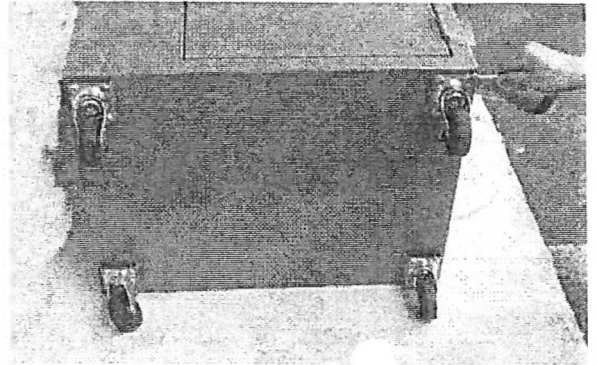
1. CASTER	4PCS
2. INLET	1PCS
3. Y-INLET	1PCS
4. CARRAGE BOLT	12PCS
5. CAP SCREWS	2PCS
6. PHILIPS SCREW	1PCS

ASSEMBLY

To assemble your CT-502H, follow the instructions given below:

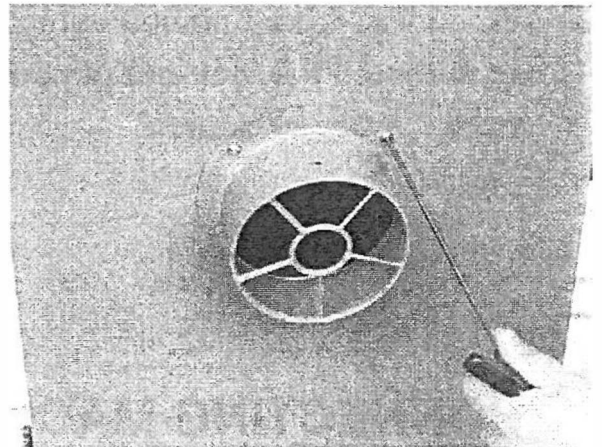
The CT-502H comes with two swivel casters and two lock swivel casters or portability. To install the casters:

1. Put a piece cardboard on the floor to prevent the dust collector body from being scratched. Get the help of a friend or assistant and position the dust collector on the cardboard on its side.
2. Attach the swivel caster to the dust collector base by aligning the four holes on the base with the four holes on the swivel caster bracket and securing it using screws provided.



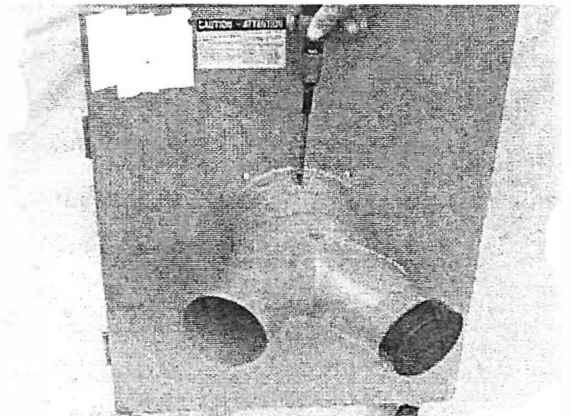
To install the inlet:

Align the holes on the inlet with the holes on the dust collector and secure it using screws provided.



To install the Y-inlet:

Align the holes on the Y-inlet with the holes on the dust collector and secure it using screws provided.



ON/OFF SWITCH

To start the machine

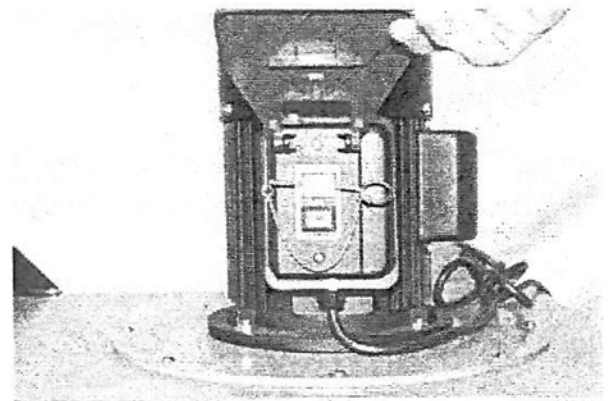
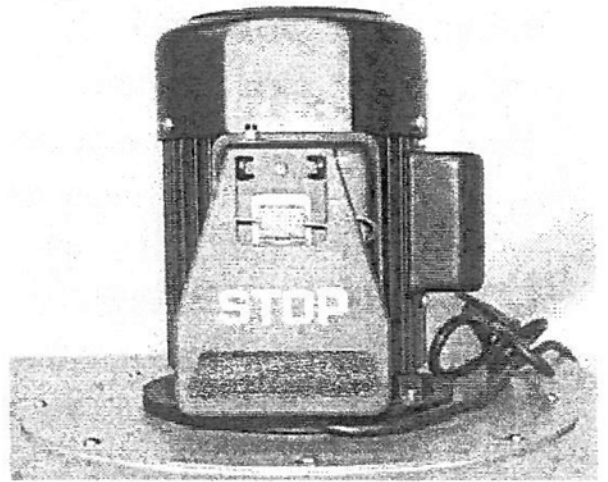
Lift the red stop switch panel and remove the lock-out pin. Lower the stop panel and push the green "ON" button. Wait for the dust collector to reach full speed before using.

To stop the machine

Push on the RED "STOP" panel and wait for the dust to come to a complete stop.

The ON/OFF switch assembly **A** is equipped with a lock-out safety pin **B**. When the pin is installed through the green "on" button **C**, the machine cannot be started.

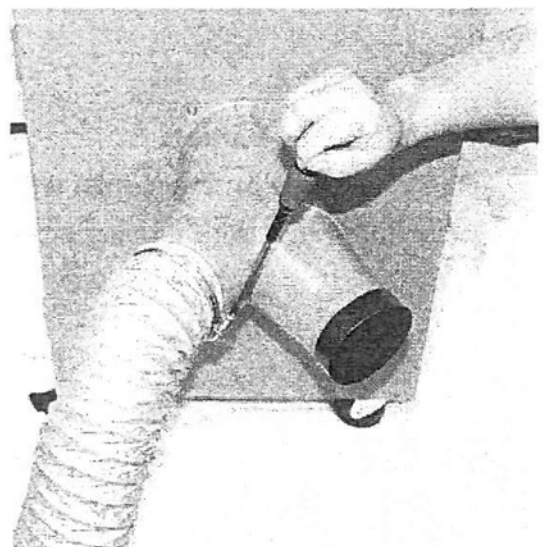
When you have finished using the machine be sure to re-install the lock-out pin and unplug the saw from the power source.



CONNECTING MACHINES TO DUST COLLECTOR

The 10-915M1 features a 6" main inlet and comes with a Y-inlet having two 4" ports.

When connecting machines to the dust collector, use proper sized hoses and make sure all the connections are sealed tightly. Two 4" dust port to be used with two machines at the same time. When you are using only one of the ports with a machine, simply put the end cap (provided) onto the other port.



TEST RUN

Now that you have assembled your machine completely, it is time for a test run to make sure that the machine works properly and is ready for operation.

All the tools and objects used for assembling the machine should be removed and cleared away during the test run.

WARNING!

Before starting the dust collector, make sure that you have read and understood the manual and you are familiar with the functions and safety features on this machine. Failure to do so may cause serious personal injury.

Plug the cord to the power outlet and turn the dust collector ON. See if the dust collector operates correctly.

During the test run if there is any unusual noise coming from the machine or the machine vibrates excessively, shut off the machine immediately and disconnect the cord from the power source.

Check all the parts you have assembled once again and investigate to find out the problem. If the dust collector operates correctly,

Once the safety key is removed, turn the switch ON.

Turn the machine OFF and installed the safety key on the switch for safety.

MAINTENANCE

During the life of your machine, you will need to practice some regular maintenance to keep your saw in peak performance condition. Check the dust collector daily for loose mounting bolts/screws, damaged wires, worn switch, full collection bag and any other unsafe condition.

WARNING!

Make sure the machine is turned off and the cord is disconnected from the power source before servicing and removing/replacing any components on the machine.

LUBRICATION

The shaper has sealed lubricated bearings in the motor housing and arbour assembly and do not require any lubrication.

MACHINE STORAGE

When the dust collector is not in use, disconnect the cord from the power source and store it in a dry place. Do not expose the machine to rain. Make sure to keep the cord away from potential damage sources such as; sharp objects, chemicals, heat sources and water.

EMPTYING COLLECTION DRAWER

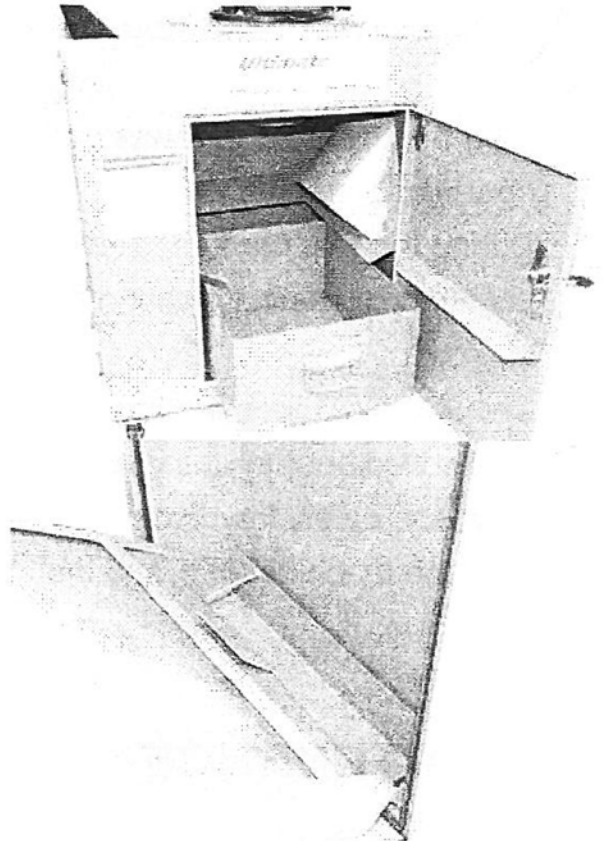
The collection drawer inside the cabinet where it throws all the dust. The drawer on your dust collector must be checked and emptied regularly. The machine operates at a much higher level of efficiency when the collection drawer is empty. Emptying the drawer is very simple and easy.

Make sure the switch is in the OFF position and the cord is disconnected from the power source.

Open the cabinet door and pull the drawer out using the handle. Emptying collection drawer

Open the cabinet back side door and take the drawer out using the handle. Emptying collection drawer

Put its back in place and close the cabinet door.

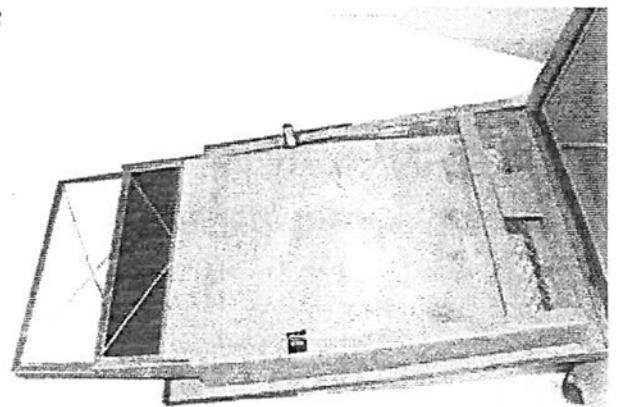


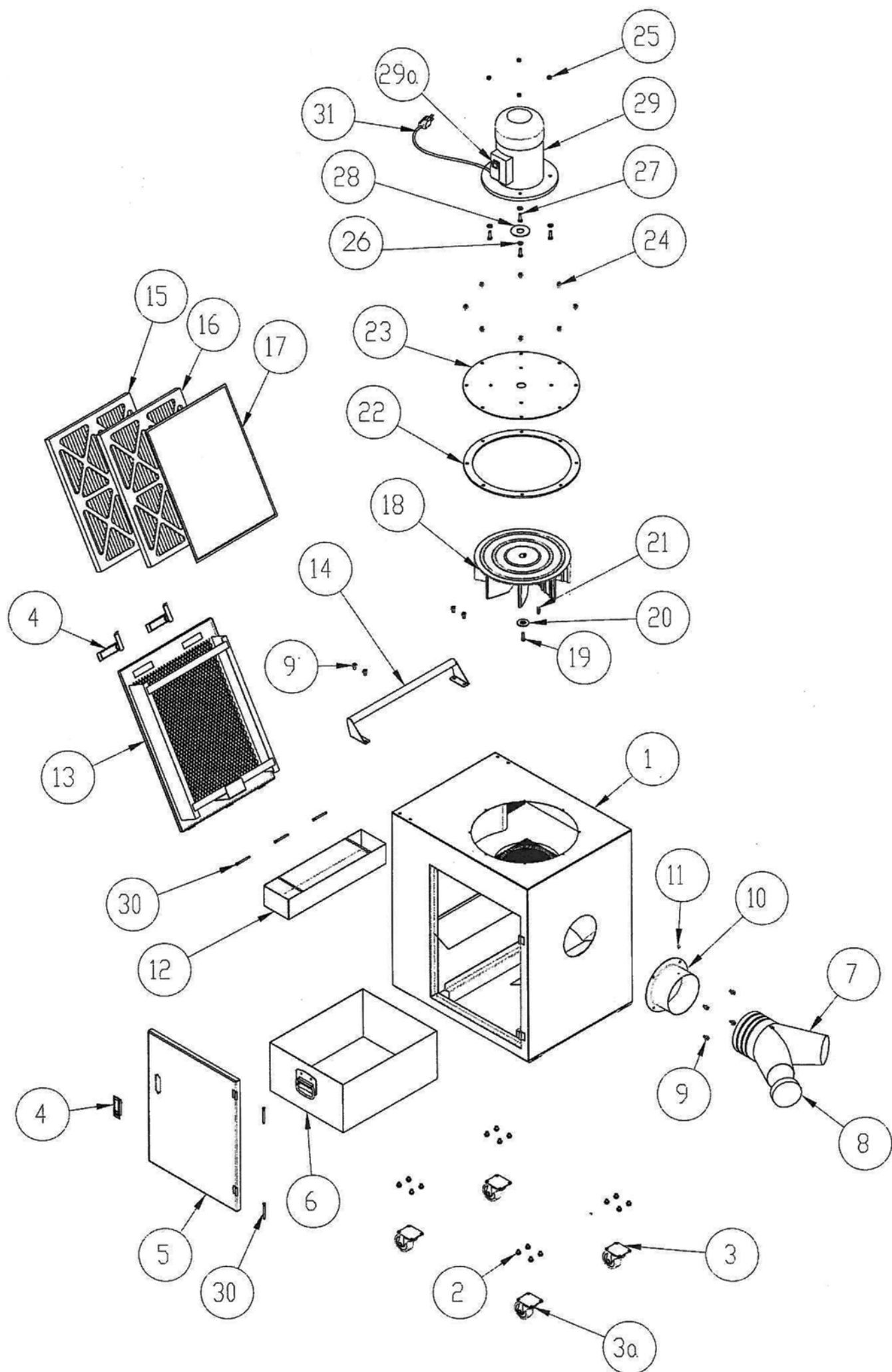
REPLACING THE FILTER

To replace the filter, make sure the switch is the OFF position and the cord is disconnected from the power source.

Open the back side door there are 3 filters on the door replace new filter and tighten the clamp to secure the new filter to the dust collector.

The stainless filter can be recycle use. If the filter was dirty cleaning it and replace again.





Part List

Parts No.	Description	Specification	Q'TY
10950-1	Main Body		1
10950-2	Flange Bolt	5/16" x 3/8"	16
10950-3	Caster	3"	2
10950-3a	Caster w/ Brake	3"	2
10950-4	Latch		3
10950-5	Door		1
10950-6	Dust Collection drawer		1
10950-7	Inlet	6"x 4" x 2	1
10950-8	Inlet Cap	4"	1
10950-9	Button Head Screw	5/16" x 1/2"	8
10950-10	Inlet Tube	6"	1
10950-11	Philp HD Screw	3/16" x 1/4"	1
10950-12	Fine Dust Collection box		1
10950-13	Side Door		1
10950-14	Handle		1
10950-15	1Micron Filter		1
10950-16	Active Carbon Filter		1
10950-17	Stainless Filter		1
10950-18	Aluminum Impeller		1
10950-19	Cap Screw	M6 x 30(LH)	1
10950-20	Impeller Washer		1
10950-21	Key	7 x 7 x 25	1
10950-22	Foam Gasket		1
10950-23	Motor Plate		1
10950-24	Button HD Screw	1/4" x 3/8"	8
10950-25	Nut	5/16"	4
10950-26	Washer	5/16"	4
10950-27	Hex Bolt	5/16" x 1"	4
10950-28	Motor Packing		1
10950-29	Motor		1
10950-29a	Switch		1
10950-30	Hinge Pin		5
10950-31	cable		1

The Axminster guarantee

Buy with confidence from Axminster!

So sure are we of the quality, we cover all parts and labour free of charge for three years!



For more information visit axminstertools.com/3years



The packaging is suitable for recycling.
Please dispose of it in a responsible manner.



EU Countries Only

Do not dispose of electric tools together with household waste material.
By law they must be collected and recycled separately.

Axminster Tools, Axminster Devon EX13 5PH

axminstertools.com