



Le-Matic BR300 and BR500 Portable Edgebanders

Maintenance

Edgebanders need daily maintenance to ensure that they are kept in good working order. It is the responsibility of the end user to ensure this is carried out as **FAILURE TO DO SO WILL VOID ITS WARRANTY**. Regular cleaning will extend the life of the machine, ensure maximum performance and protect your investment.



**FAILURE TO MAINTAIN YOUR
EDGE BANDER WILL VOID ITS
WARRANTY!**

Please see the photos showing which areas of the edgebander needs daily cleaning.

Photo 1 - The overflow channel needs to be kept clear and should be cleaned out after each use. This channel returns excess glue to the glue pot. If not cleaned the glue will drip inside the body of the edgebander which can damaged the electrics.

Photo 2 - The out-feed and work guide areas needs to be kept clean at all times, build-ups of glue in these areas can affect the quality of your finish and may contaminate the edge-banding roller.

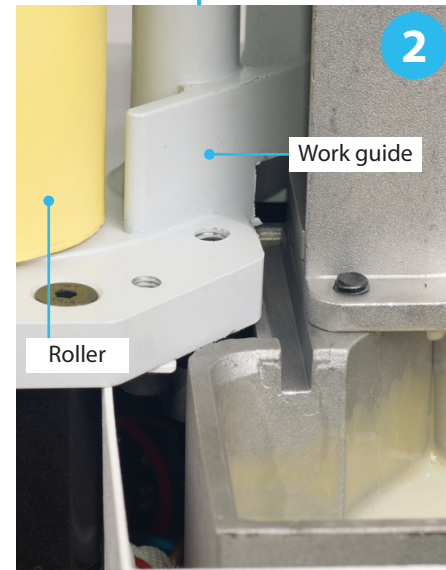
Photo 3 - This area of the machine must be cleaned to prevent the glue being pushed down inside the body of the edgebander.

Recommended tools for cleaning:

- **Liberon Wax and Polish remover**
- **6 Inch steel rule**
- **Putty knife**



• Make sure the overflow channel is kept clear and should be cleaned out after every use.



• Make sure the out-feed and work guide areas are kept clean to prevent build-up of glue, which can affect the finish and can contaminate the roller.



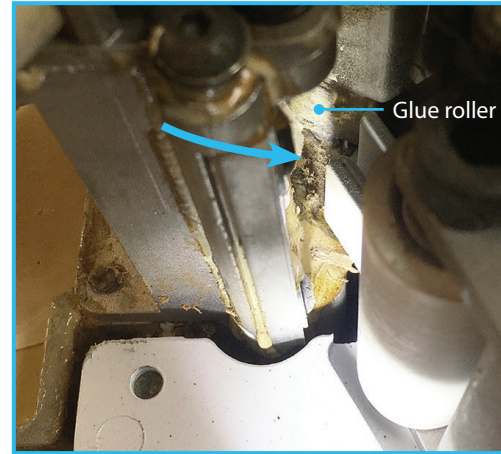
• The area circled must be cleaned to stop the build-up of glue being pushed down inside the body of the edgebander.

If the Equipment is not maintained properly it can damage your Edgebander as well as your pocket!



Tip - Watch the temperature... Do not let the machine sit idle at operating temperature when not in use, reduce the temperature by 30 degrees if the edgebander will be idle for longer than 15 minutes.

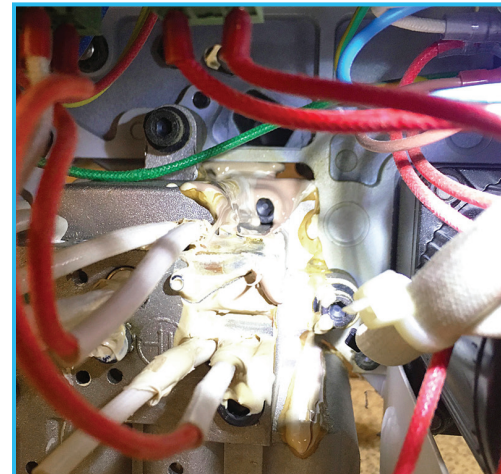
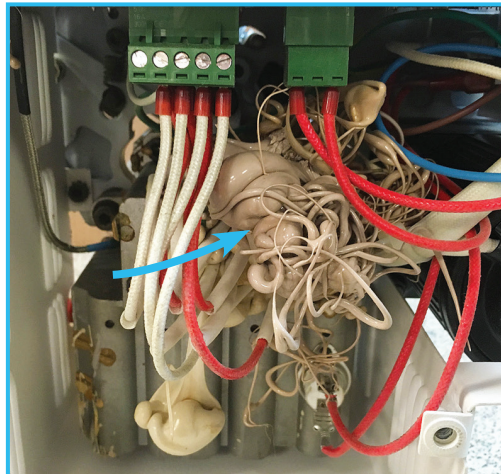
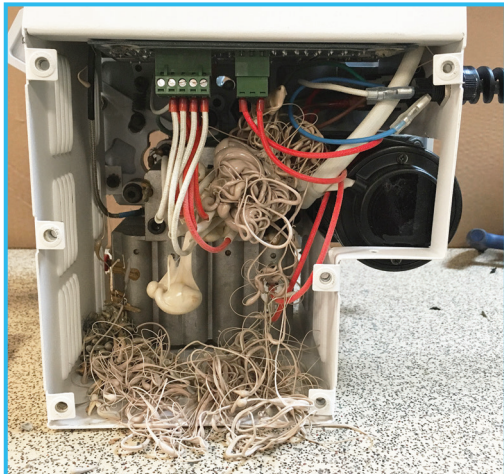
When you need to use it again it will heat back up to operating temperature within a few minutes. Make sure that you are using the temperature recommended by the glue manufacturer. Over heating the glue can cause burning, this can damage internal components such as the glue pot.



• The pictures above shows a build up of dried glue in the out-feed and work areas this has caused the edgebander roller to become contaminated. This will effect the quality of the finish.

• The picture above shows a build-up of glue around the glue roller.

• The overflow channel is blocked causing the hot glue to drip down inside the unit.



• With the overflow channel blocked, hot glue will drip down inside the body of the machine and form around the electrical components. Over time this will cause damage to the internal components of your edgebander, which will cause the unit to stop functioning. It is your responsibility to maintain your equipment, **FAILURE TO DO SO WILL VOID ITS WARRANTY!**