

Axminster Digital Thickness Display



The Axminster Digital Display will give an accurate visual indication of the amount you are adjusting the thickening table in 0.10mm increments. Perfect for multiple board production.

- To fit the AW106PT(2), AW128PT, AW168PT
- Easily fitted, easy to set up and very accurate
- A very visual indication of the thickening table adjustment
- Early models of the AW128PT will require 2 small holes to be drilled in the chassis

AT: 27.05.2021

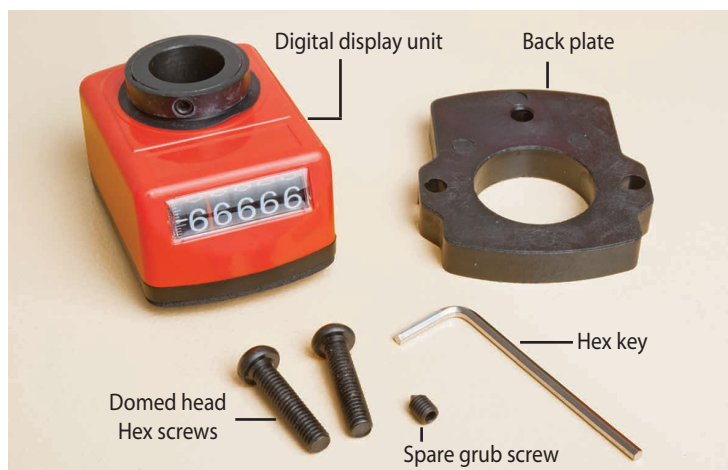


Fig A

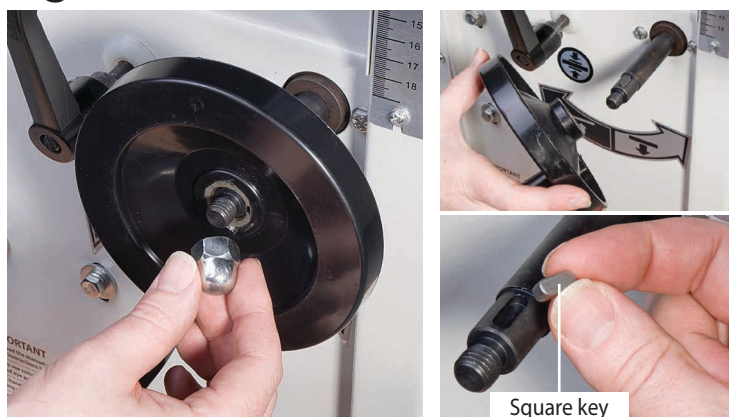


Fig B



1. Remove the motor drive housing cover by removing the securing screws, place safely aside.
2. Remove the domed nut that secures the 'Thickening Table Rise & Fall Wheel', place both aside. Remove the square key from the machined slot and place safely aside, see fig A.
3. Undo and remove the two bolts holding the operating wheel drive shaft. Locate the back plate and the two domed head Hex screws. Slide the back plate over the drive shaft, line up pre-drilled holes and secure in place with the two Hex screws and locking nuts you removed earlier, see fig B.

Fig C



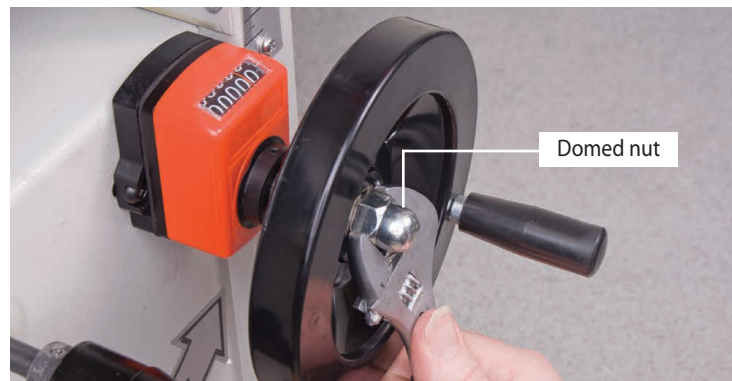
4. Slide the Digital Display unit over the drive shaft and insert the locating pin to the rear of the unit into the pre-drilled hole in the back plate. Press firmly home, see fig C-D-E.

Fig D-E



Continues Over...

5. Replace the square key into the machined slot on the drive shaft, line up the machined key slot to the centre of the hand wheel and slide the wheel onto the shaft. Replace the domed nut and tighten, see fig D-E.
6. Place a straight edge across the thickening table, raise the table until the tip of the cutter-block blade at it's lowest point is touching the top of the straight edge, see fig F-G.



7. Using a vernier, measure the height of the straight edge and write down the reading, see fig H.
8. Turn the collar mechanism on the digital display unit and dial in the measurement you wrote down, see fig I. Using the supplied Hex key tighten the grub screw, clamping the collar to the drive shaft, see fig J.

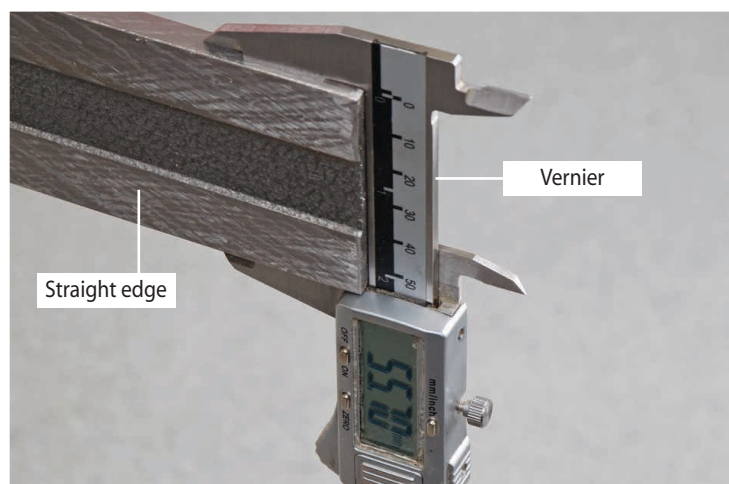
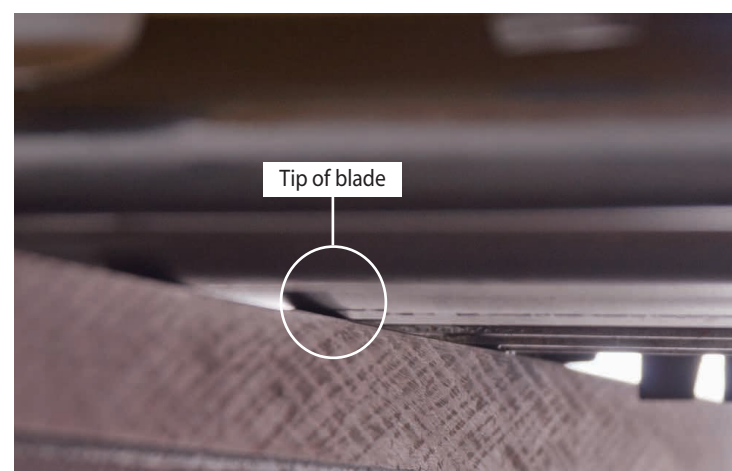
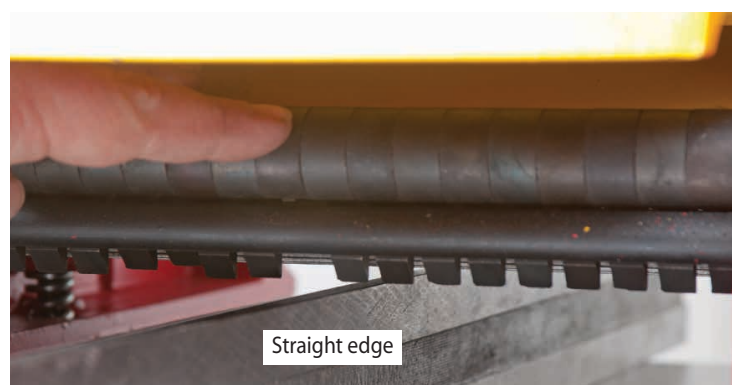


Fig I-J



Fig F-G-H



9. Replace motor drive housing cover and remove the straight edge from the thickening table.