

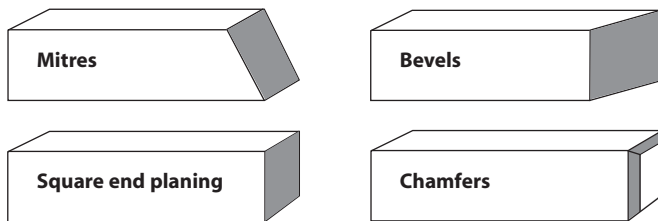
Axcaliber[®]

Mitre Trimmer

Ideal for all mouldings and sections

- Perfect squaring cuts, up to 25mm x150mm
- Vertical cuts to 100mm – baseboards and stops

Designed for mitring, beveling and squaring ends of wood trim and molding, eliminating planing or sanding to fit. The illustrations below show the many cuts and the versatility of this unique tool. All the cuts leave a smooth surface for gluing.



Why is the Axcaliber Mitre Trimmer so fast and accurate?

Unlike the mitre box saw which leaves a rough surface, the Mitre Trimmer cuts with razor-sharp knives to shear off the wood for a glass smooth finish cut.

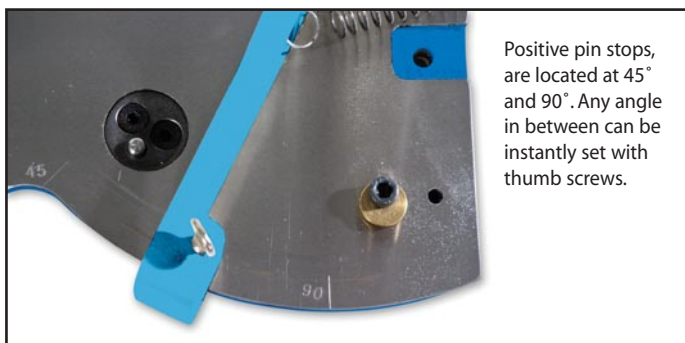
The two fences, left and right, can be adjusted and locked instantly to any angle from 45° to 90°, and enable you to take up to 100mm stock when mitring and 150mm when squaring ends.

Ideal for the trim carpenter, furniture and cabinet maker, picture framer or serious wood craftsman, this tool can increase skill and greatly reduce the time cost required to produce quality workmanship.

The Axcaliber Mitre Trimmer is made of machined cast iron to maintain its accuracy and durability for a lifetime. The shearing knives are of rugged, heat treated tool steel and can be easily detached for honing.

All cuts on the trimmer must be made at or near the end of moulding. Cut-off can be sawed at 45°, slightly over length. Softwood moulding and trim can be sawn off square, rough mitred with a chop cut and trimmed with one or two thin shaving slices.

Hardwoods must be sawn at approximately 45°, then trimmed. The harder the wood, the thinner the trim cut, but the result is always a perfect mitre. In off-square joinery, paper thin corrective cuts are made quickly and easily.



For further information please visit our website or telephone 0300 100 1008

www.axcaliber.co.uk



WARNING

For your safety please keep hands away from the blades and ensure that this tool is securely fixed to a bench.



Fence locked at 90°



Fence locked at 45°

Accessories

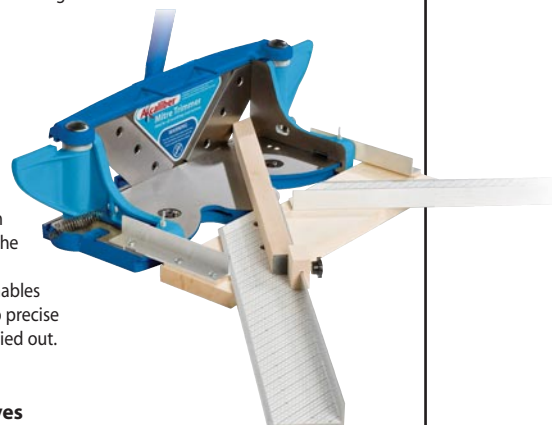
Top Trim

The top trim attachment enables the section to be presented to the blade at an angle of 45° to the vertical rather than the horizontal (see picture); this allows mitres to be trimmed on curved, hollow or difficult to hold mouldings. The maximum section width that can be used with the top trim is 65mm and there is only one angle option, 45°.



Cut Length Attachment

The cut length attachment is 736mm (29") long with an arm for each side of the trimmer and a length stop. It enables repeat cutting to precise length to be carried out.



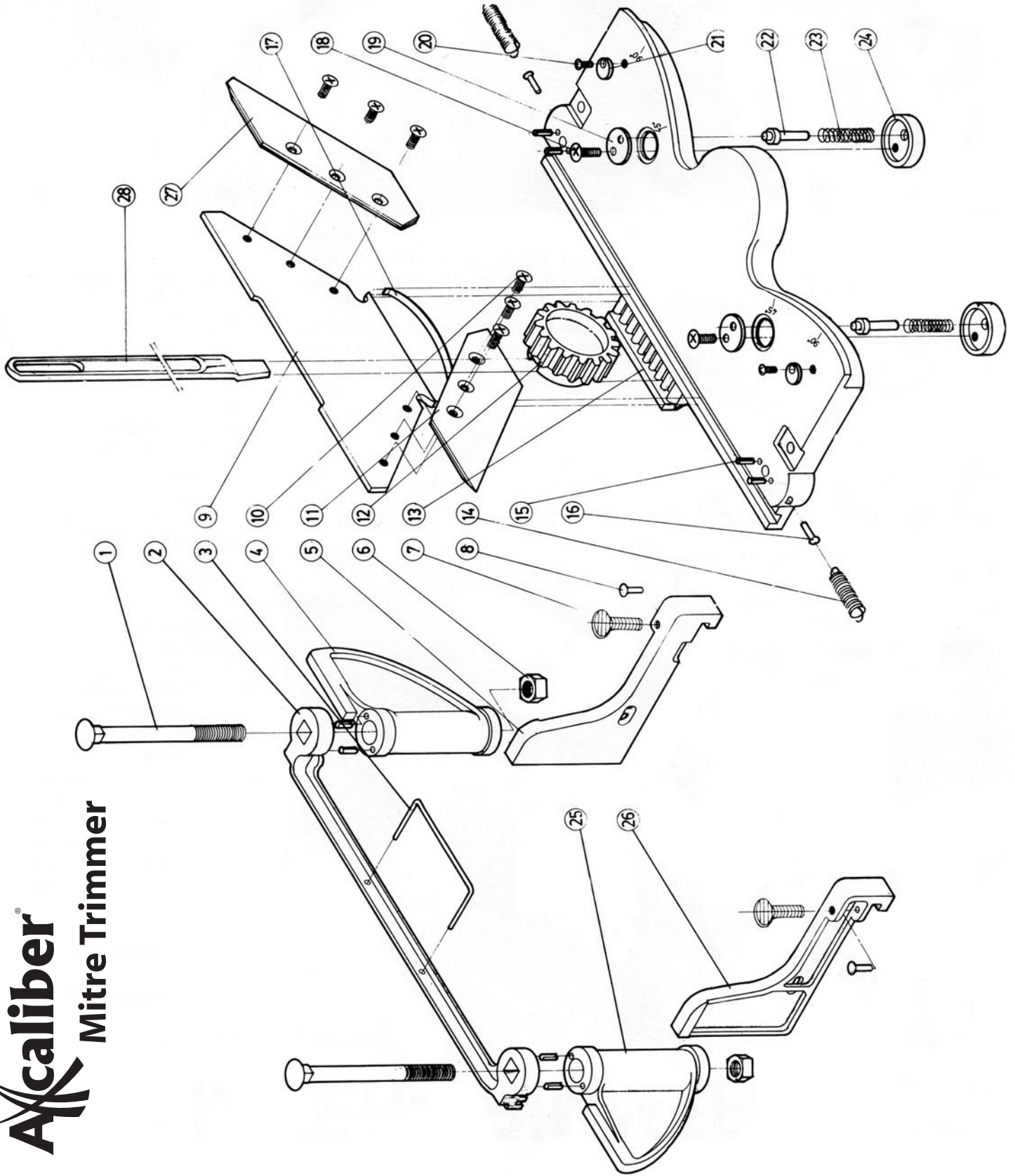
Trimmer Knives

These heavy duty blades are super sharp and produce an almost glass-like finish on even the toughest end grain.



Axcaliber[®]

Mitre Trimmer



PARTS NO.	DESCRIPTION	Q'TY
01	BOLT	2
02	BRACKET	1
03	HANDLE	1
04	BLADE GUARD, RIGHT	1
05	MITRE PLATE, RIGHT	1
06	HEX. NUT	2
07	THUMB HEAD SCREW	2
08	REVIT	2
09	BLADE BRACKET	1
10	SCREW	6
11	BLADE, LEFT	1
12	GEAR	1
13	BASE	1
14	SPRING	2
15	PIN	8
16	RIVET	2
17	SPRING	1
18	SCREW	2
19	FIXING PLATE	2
20	SCREW	2
21	FIXING PLATE	2
22	FIXING BAR	2
23	SPRING	2
24	FIXING BASE PLATE	2
25	BLADE GUARD, LEFT	1
26	MITRE PLATE, LEFT	1
27	BLADE, RIGHT	1
28	CUTTING HANDLE	1